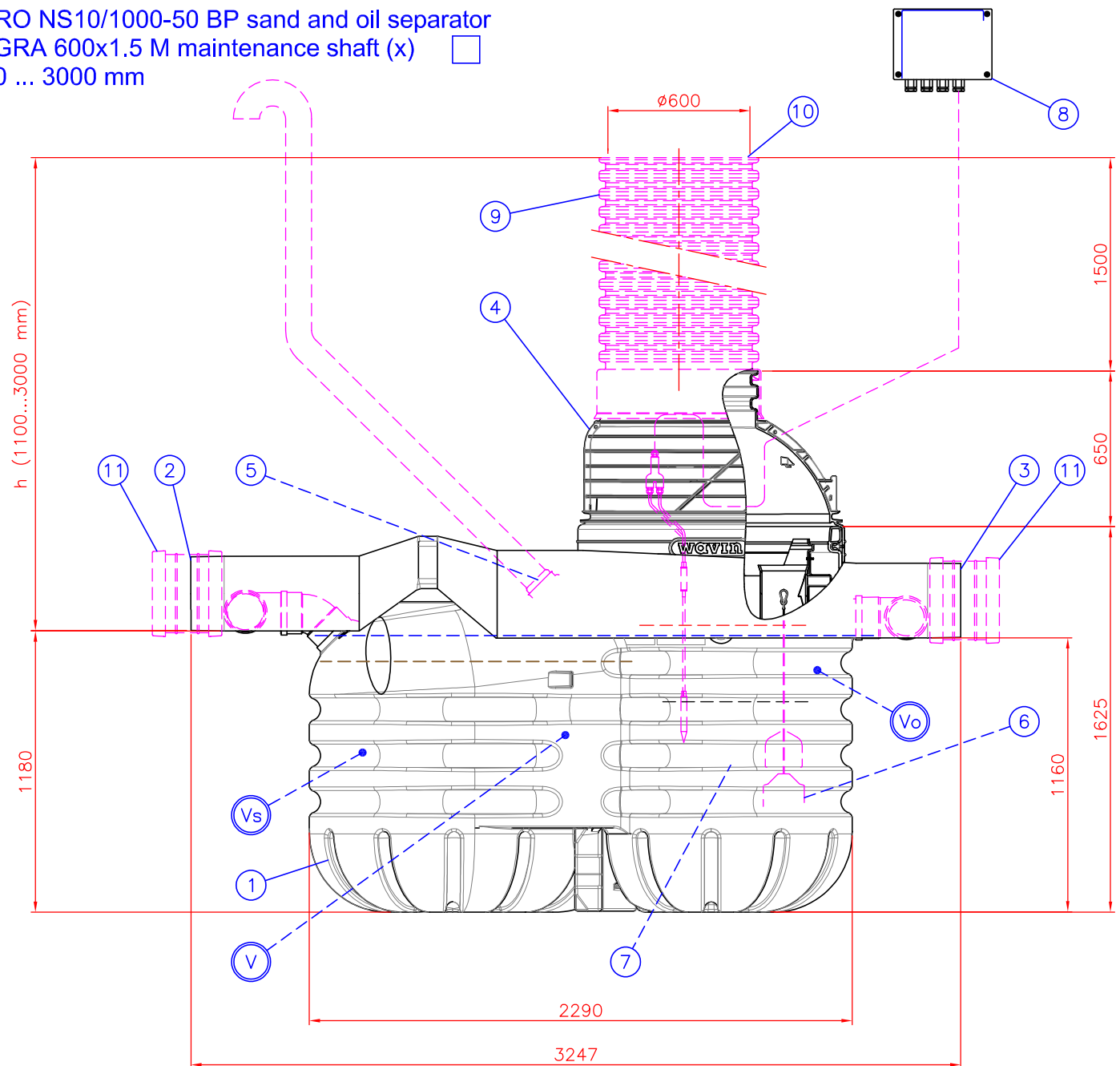
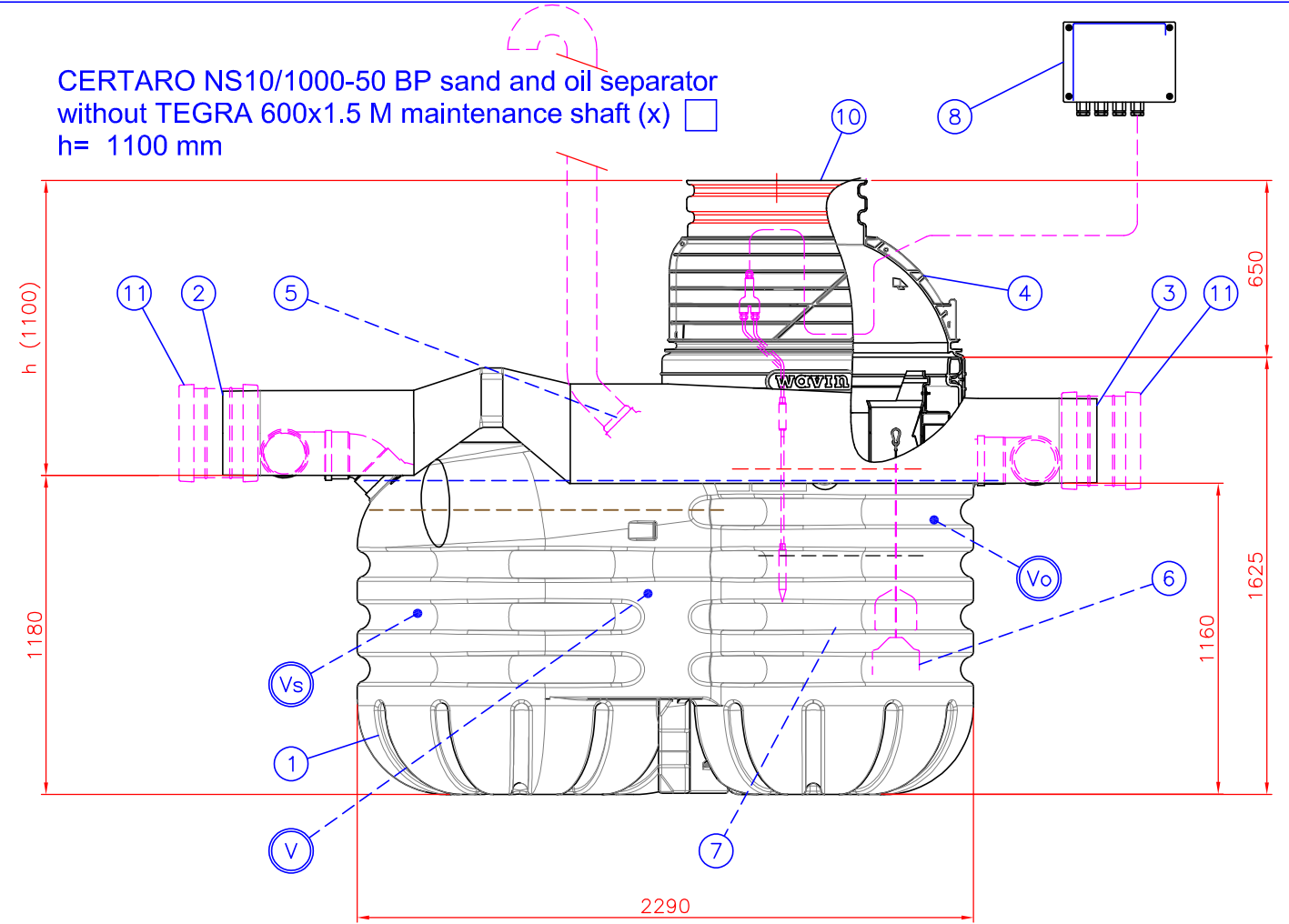


CERTARO NS10/1000-50 BP sand and oil separator
with TEGRA 600x1.5 M maintenance shaft (x)
h= 1100 ... 3000 mm



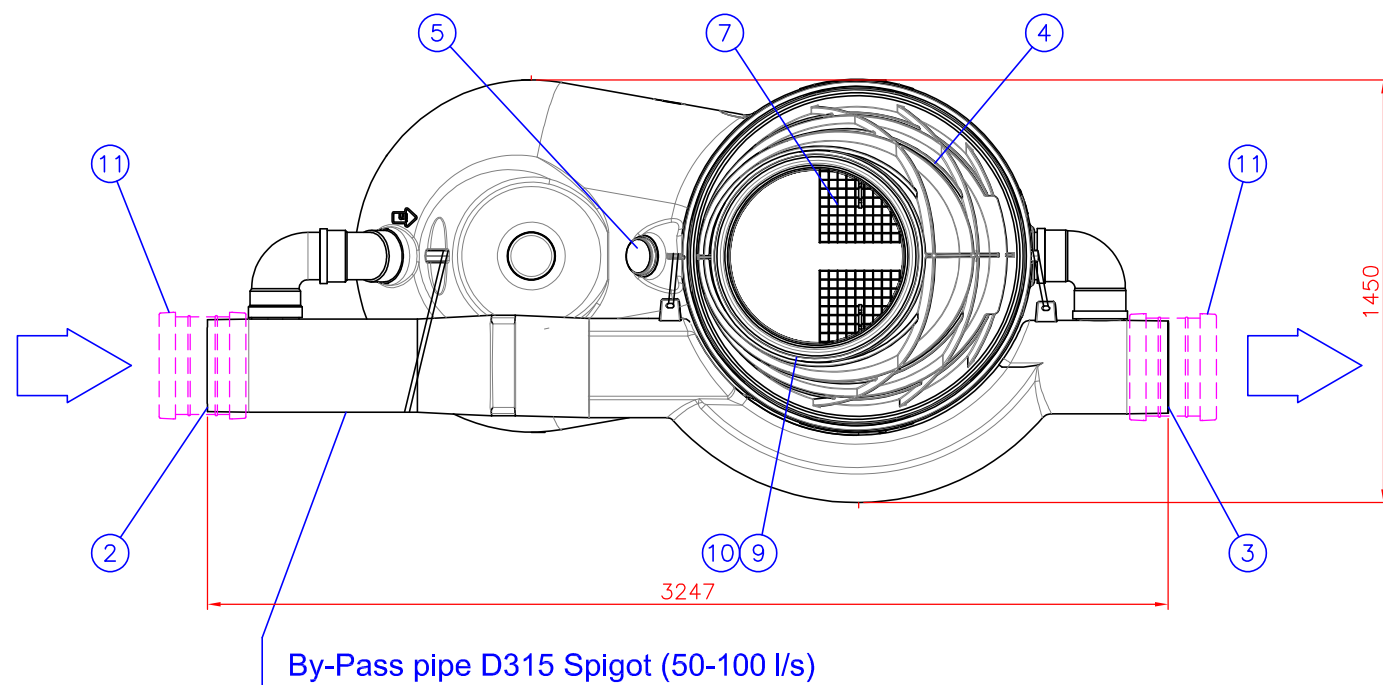
CERTARO NS10/1000-50 BP sand and oil separator
without TEGRA 600x1.5 M maintenance shaft (x)
h= 1100 mm



Maximum SLW60 (100kN/m²) traffic load if 1,0m hard surface coverage above inlet (water level).
Maximum groundwater level 2,5m above bottom of tank.
Maximum depth is 3,0m from cover down to inlet (water level).

Flow capacity By-Pass: 50 - 100 l/s (gradient maximum 6‰).

Weight 340 kg




By-Pass pipe D315 Spigot (50-100 l/s)

h = Installation height from ground surface

h = _____ (1100 - 3000 mm)

11	ACCESSORY: Double socket D315, 2 pcs			(x) <input type="checkbox"/>
10	ACCESSORY: Cover (as needed)			(x) <input type="checkbox"/>
9	ACCESSORY: TEGRA 600 maintenance shaft with socket and 600 sealing ring			(x) <input type="checkbox"/>
8	Alarm system (central unit with oil surface and blockage detection probes)			
7	Coalescence filter unit			2
6	Automatic closure device	D160 (0.85-0.9g/cm ³)		1
5	Ventilation outlet	D110		1
4	TEGRA 1000/600 cone	D1100/600 H=650 mm		1
3	Outlet sewer (By-pass pipe)	D315 spigot		1
2	Inlet sewer (By-pass pipe)	D315 spigot		1
1	CERTARO NS10/1000 sand and oil separator			1
	Flow capacity class-1: 10 l/s	Length of tank: 2290		
	Inlet/Outlet D160	Height of tank: 1625		
	Material PE-MD, pH 3-10/Heat endurance max. 50°C	Width of tank: 1450		
	V Total (wet) volume	2079 l		
	Vo Oil storage in filter box: 140 liter and in total:	625 l		
	Vs Sludge volume	1000 l		

Title: CERTARO NS10/1000-50 BP sand and oil separator (3031096)		Drawing type CUSTOMER DRAWING		
Design by: AL/JS	Approved by: TaP 26.04.18	Drawing no. 23KB20ar	Date: 26.04.2018	Scale:
Construction site:		 Wavin Sweden Kjulamon 6 SE-63506 ESKILSTUNA www.wavin.se wavin.se@wavin.com +46 (0) 16 - 541 0000		

This drawing and the technical information included in the drawing are property of Wavin-Labko.
All the national regulations concerning this product have to be checked before purchase of the product.
Installation have to be done according to installation manual.