

Wavin SiTech+
Product Guide

Low noise soil & waste drainage



wavin

orbia 

1. Wavin SiTech+

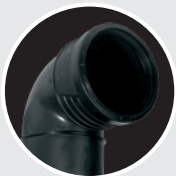
1.1. System description

Wavin SiTech+ is a mineral reinforced polypropylene (PP) soil and waste system. The system offers increased robustness, low-noise properties and improved ease of installation.

Its flexible connectivity and push-fit system makes SiTech+ a complete plug and play solution for waste water discharge in buildings.

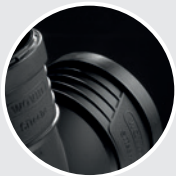
Quality of living is an important consideration in building design. A reduction of noise in water discharge systems improves end-experience in both living and working environments. Wavin SiTech+ meets the latest construction requirements and fulfills customers' demand for increased comfort and quality.

Key system benefits



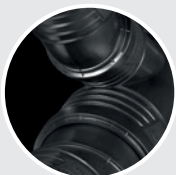
Optimal noise performance

Wavin SiTech+ is an innovative soil and waste system with proven low noise technology. SiTech+ has an optimized 3-layer pipe structure for reduced noise levels. The fittings have an increased weight by 20% for improved acoustic comfort during water flow.



Easy to install

Better handling during installation due to the grip features. Ribbed fittings provide enhanced grip for easy installation in complex environments. SiTech+ is perfect for any project, from small renovations to large-scale construction jobs.



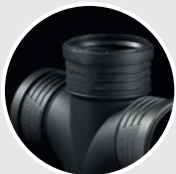
Angular rotation guidance

Angular rotation guidance to align and rotate fittings in the right direction. Fittings have different markings at 15° and 45° intervals for easy alignment. SiTech+ makes it easy to align fittings which need to be positioned at a rotated angle.



Insertion depth check

Insertion depth check on fittings to make a secure and safe connection. These easily visible SiTech+ markings can also confirm the exact 10 mm space needed to cope with thermal expansions at long pipe lengths.



New black color

The new black color adds to the durability and robustness of SiTech+. The black color improves protection against UV radiation when stored outside at a building site. Furthermore the matte black finish is less sensitive to dirt and gives the system a professional appearance.

1.2. Field of application

Wavin SiTech+ meets system requirements for soil & waste discharge systems (EN 1451-1), including noise reduction and fire resistance (EN 13501-1). The emitted noise level of SiTech+ is measured by the Stuttgart Fraunhofer Physical Constructions Institute (DIN EN 14366).

Wavin SiTech+ is the ideal solution for installation in multi-storey building and those that are particularly sensitive to noise like apartment buildings, hotels, offices, hospitals, elderly homes and libraries.

Wavin SiTech+ can be used for water discharge at temperatures up to 90°C, with peaks of to 95°C for short periods. It can also be used at low temperatures up to -20°C. This durability makes it an ideal solution for extreme-temperature drainage areas such as kitchens, laundromats and industrial waste environments.

Please contact Wavin if you have any questions about particular application environments.

The system is offered in a full range of diameters:

DN/OD

- ▷ 32 mm
- ▷ 40 mm
- ▷ 50 mm
- ▷ 75 mm
- ▷ 90 mm
- ▷ 110 mm
- ▷ 125 mm
- ▷ 160 mm

1.3. Special fittings

The Wavin SiTech+ portfolio includes specialized fittings for easier and more efficient installation and use, particularly in areas where space is limited.

Shower branches provide an easy connection of both the toilet and shower to the down pipe.

Swept branches, as compared to sharp angle fittings, allow water to run more smoothly while reducing overall noise levels, improve the ventilation and increase the flow rate.

The new design of access pipes makes inspection easier.





Technical datasheet SiTech+

Range

Wavin SiTech+ offers a complete range of pipes and fittings in PP-MD, from 32 mm to 160 mm.

Diameter DN/OD	Thickness mm	Socket Length mm	Class
32	1,8-2,2	43	S16
40	1,8-2,2	45	S16
50	1,8-2,2	47	S16
75	2,6-3,1	53	S14
90	3,1-3,7	57	S14
110	3,4-4,0	64	S16
125	3,9-4,5	71	S16
160	4,9-5,6	76	S16

Technical Specifications

Pipe structure |

Co-extruded 3 layers pipe.

PP mineral filled for more strength and durability, even resistant at low temperatures.

Connections |

Push-fit SBR rubber system, to obtain fast, safe and reliable installation.

Fire behavior |

Class C-s2, d0 according to EN13501-1.

Density | Pipe 1,30 gr/cm³; Fitting 1,50 gr/cm³.

Working Temperature |

90°C continuous temperature; 95°C peak temperature.

Expansion coefficient ≈ 0,12 mm/m/K.

Impact Test -20°C according to EN744.

Ring Stiffness > = 5,5 Kn/m² (ref. OD110)

Conformity certification |

PIIP (n°1866 - 1867 - 1868)

DIBT (n° Z-42.1-539)

ITB (n° AT-15-7703).

Applications

Wavin SiTech+ is the ideal solution for both residential and non-residential buildings, where customer put more attention to low-noise properties (hotels, offices, hospitals). Thanks to the mineral filled, the system can be even be installed till -20°C air temperature.

Certifications

Wavin SiTech+ meets all standards set for soil & waste discharge systems (EN 1451-1), application EN12056-2, fire behavior EN13501, and noise protection according to the Italian Standard D.P.C.M. 05.12.1997. The low noise performance has been measured at the Fraunhofer Institute in Stuttgart, according to the EN 14366. Company meets quality requirements according to ISO 9001, and environmental requirements according to ISO 14001.

Technical features

- Outer layer made of black polypropylene polymer. Resistant to environmental influences.
- Middle layer made of polypropylene copolymer. With mineral fillers for good soundproofing properties
- Inner layer made of grey polypropylene copolymer. Particularly resistant to aggressive waste water. Smooth inner pipe surface for good sewage drainage. Chemically resistant. Inspection-friendly thanks to the light inner pipe surface.

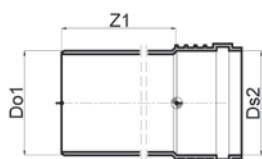


Wavin SiTech+ Product range



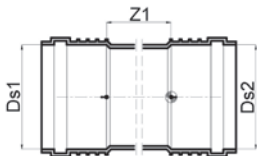
Wavin SiTech+ Product range

SiTech+ Pipe S/PL



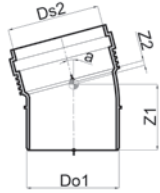
DN/OD mm	L mm	Z1 mm	Type	Do1=Ds2 mm	Article code
32	293	250	S/PL	32	3091140
32	545	500	S/PL	32	3091141
32	1045	1000	S/PL	32	3091142
32	1545	1500	S/PL	32	3091143
32	2045	2000	S/PL	32	3091144
40	295	250	S/PL	40	3091145
40	546	500	S/PL	40	3091146
40	1046	1000	S/PL	40	3091147
40	1546	1500	S/PL	40	3091148
40	2046	2000	S/PL	40	3091149
50	197	150	S/PL	50	3078869
50	297	250	S/PL	50	3078870
50	549	500	S/PL	50	3091150
50	1049	1000	S/PL	50	3091151
50	1549	1500	S/PL	50	3091152
50	2049	2000	S/PL	50	3091153
50	3049	3000	S/PL	50	3091154
75	203	150	S/PL	75	3085647
75	303	250	S/PL	75	3074148
75	554	500	S/PL	75	3091155
75	1054	1000	S/PL	75	3091157
75	1554	1500	S/PL	75	3091158
75	2054	2000	S/PL	75	3091159
75	3054	3000	S/PL	75	3091160
90	207	150	S/PL	90	3085670
90	307	250	S/PL	90	3085671
90	558	500	S/PL	90	3091161
90	1058	1000	S/PL	90	3091162
90	1558	1500	S/PL	90	3091163
90	2058	2000	S/PL	90	3091164
90	3058	3000	S/PL	90	3091165
110	214	150	S/PL	110	3075739
110	314	250	S/PL	110	3078871
110	564	500	S/PL	110	3091166
110	1064	1000	S/PL	110	3091167
110	1564	1500	S/PL	110	3091168
110	2064	2000	S/PL	110	3091169
110	3064	3000	S/PL	110	3091170
125	321	250	S/PL	125	3091171
125	571	500	S/PL	125	3091172
125	1071	1000	S/PL	125	3091173
125	1571	1500	S/PL	125	3091174
125	2071	2000	S/PL	125	3091175
125	3071	3000	S/PL	125	3091176

DN/OD mm	L mm	Z1 mm	Type	Do1=Ds2 mm	Article code
160	326	250	S/PL	160	3085673
160	577	500	S/PL	160	3091177
160	1077	1000	S/PL	160	3091178
160	2077	2000	S/PL	160	3091179
160	3077	3000	S/PL	160	3091180



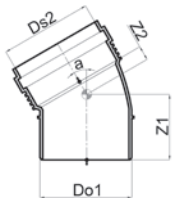
SiTech+ Pipe S/S

DN/OD mm	L mm	Z1 mm	Type	Do1=Ds2 mm	Article code
32	589	500	S/S	32	3074180
32	1089	1000	S/S	32	3074181
32	2089	2000	S/S	32	3074182
32	3089	3000	S/S	32	3074183
40	592	500	S/S	40	3074184
40	1092	1000	S/S	40	3074185
40	1592	1500	S/S	40	3074186
40	2092	2000	S/S	40	3074187
40	3092	3000	S/S	40	3074188
50	597	500	S/S	50	3074189
50	1097	1000	S/S	50	3074190
50	1597	1500	S/S	50	3074191
50	2097	2000	S/S	50	3074192
50	3097	3000	S/S	50	3074193
75	608	500	S/S	75	3074194
75	1108	1000	S/S	75	3074195
75	1608	1500	S/S	75	3074196
75	2108	2000	S/S	75	3074197
75	3108	3000	S/S	75	3074198
90	616	500	S/S	90	3074199
90	1116	1000	S/S	90	3074200
90	1616	1500	S/S	90	3074201
90	2116	2000	S/S	90	3074202
90	3116	3000	S/S	90	3074203
110	627	500	S/S	110	3074204
110	1127	1000	S/S	110	3074205
110	1627	1500	S/S	110	3074206
110	2127	2000	S/S	110	3074207
110	3127	3000	S/S	110	3074208
125	642	500	S/S	125	3074209
125	1142	1000	S/S	125	3074210
125	2142	2000	S/S	125	3074211



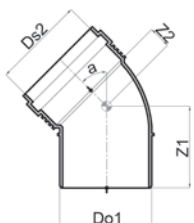
SiTech+ Bend 15°

DN/OD mm	Article code	Do1=Ds2 mm	Z1 mm	Z2 mm
32	3067708	32	49	8
40	3067709	40	52	8
50	3067710	50	55	9
75	3067711	75	63	13
90	3067712	90	69	15
110	3067713	110	79	16
125	3067714	125	88	20
160	3067715	160	97	25



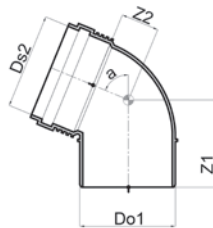
SiTech+ Bend 30°

DN/OD mm	Article code	Do1=Ds2 mm	Z1 mm	Z2 mm
32	3067716	32	51	10
40	3067717	40	55	11
50	3067718	50	58	13
75	3067719	75	68	18
90	3067720	90	76	22
110	3067721	110	88	24
125	3067722	125	96	29
160	3067723	160	109	36



SiTech+ Bend 45°

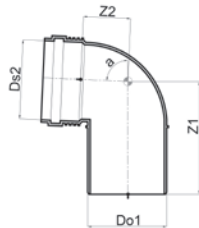
DN/OD mm	Article code	Do1=Ds2 mm	Z1 mm	Z2 mm
32	3067724	32	54	13
40	3067725	40	56	15
50	3067726	50	65	17
75	3067727	75	75	22
90	3067728	90	85	26
110	3067729	110	96	33
125	3067730	125	105	38
160	3067731	160	121	48



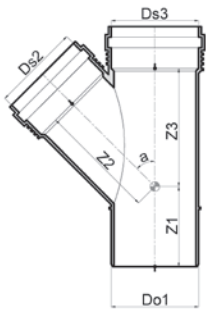
SiTech+ Bend 67,5°

DN/OD mm	Article code	Do1=Ds2 mm	Z1 mm	Z2 mm
32	3067732	32	58	17
40	3067733	40	63	20
50	3067734	50	70	21
75	3067735	75	84	34
90	3067736	90	95	41
110	3067737	110	108	47
125	3067738	125	123	55

SiTech+ Bend 87,5°



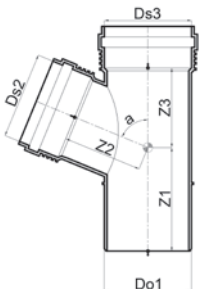
DN/OD mm	Article code	Do1=Ds2 mm	Z1 mm	Z2 mm
32	3067739	32	62	21
40	3067740	40	68	26
50	3067741	50	78	31
75	3067742	75	95	45
90	3067743	90	108	54
110	3067744	110	128	64
125	3067745	125	141	74
160	3067746	160	166	94



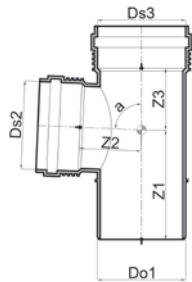
SiTech+ Branch 45°

DN/OD mm	Article code	Do1=Ds3 mm	Ds2 mm	Z1 mm	Z2 mm	Z3 mm
32x32	3067747	32	32	54	42	42
40x32	3067748	40	32	58	81	52
40x40	3067749	40	40	58	52	52
50x40	3067750	50	40	55	59	57
50x50	3067751	50	50	64	71	71
75x50	3067752	75	50	56	82	77
75x75	3067753	75	75	74	96	96
90x40	3076499	90	40	46	95	86
90x50	3067754	90	50	56	106	96
90x75	3067755	90	75	77	141	121
90x90	3067756	90	90	83	115	115
110x40	3076498	110	40	52	95	85
110x50	3067757	110	50	63	105	93
110x75	3067758	110	75	71	122	113
110x90	3067759	110	90	82	129	124
110x110	3067760	110	110	108	138	138
125x75	3067761	125	75	70	133	121
125x110	3067762	125	110	95	149	146
125x125	3067763	125	125	106	156	156
160x110	3067764	160	110	82	175	164
160x160	3067765	160	160	120	200	200

SiTech+ Branch 67,5°

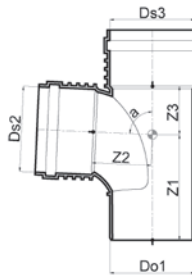


DN/OD mm	Article code	Do1=Ds3 mm	Ds2 mm	Z1 mm	Z2 mm	Z3 mm
50x50	3067766	50	50	69	40	40
75x50	3067767	75	50	70	55	46
90x90	3067768	90	90	94	70	70
110x50	3067769	110	50	77	76	54
110x75	3067770	110	75	101	147	96
110x110	3067771	110	110	87	87	68



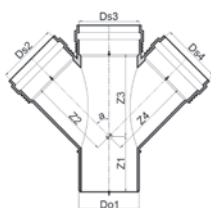
SiTech+ Branch 87,5°

DN/OD mm	Article code	Do1=Ds3 mm	Ds2 mm	Z1 mm	Z2 mm	Z3 mm
40x40	3067772	40	40	69	28	28
50x40	3067773	50	40	71	33	28
50x50	3067774	50	50	82	35	36
75x50	3067775	75	50	82	45	35
75x75	3067776	75	75	95	49	49
90x50	3067777	90	50	87	53	36
110x50	3067778	110	50	96	63	37
110x75	3067779	110	75	135	66	52
125x110	3067780	125	110	133	77	71
125x125	3067781	125	125	141	80	79
160x110	3067782	160	110	165	103	103
160x160	3067783	160	160	165	111	101



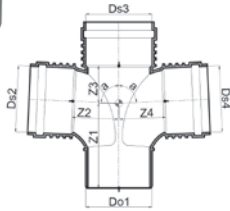
SiTech+ Branch Swept 87,5°

DN/OD mm	Article code	Do1=Ds3 mm	Ds2 mm	Z1 mm	Z2 mm	Z3 mm
90x90	3067833	90	90	126	74	52
110x90	3067834	110	90	137	86	53
110x110	3067835	110	110	144	143	64



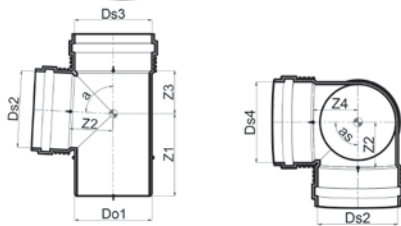
SiTech+ Double Branch

DN/OD mm	Article code	Do1=Ds3 mm	Ds2 mm	Z1 mm	Z2 mm	Z3 mm
90x50x50	3074216	90	50	56	106	96
110x50x50	3074217	110	50	96	63	37



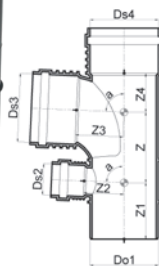
SiTech+ Double Branch 87,5°

DN/OD mm	Article code	Do1=Ds3 mm	Ds2 mm	Z1 mm	Z2 mm	Z3 mm
75x50x50	3067832	75	50	80	45	35
90x90x90	3075996	90	90	125	125	55
110x110x110	3067838	110	110	144	143	64



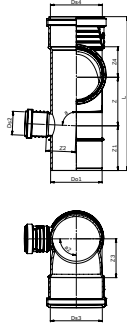
SiTech+ Corner Branch 87,5°

DN/OD mm	Article code	Do1=Ds3 mm	Ds2 mm	Z1 mm	Z2 mm	Z3 mm
90x90x90	3075995	90	90	125	63	45
110x50x50	3067831	110	50	96	63	37
110x110x110	3074399	110	110	145	63	55



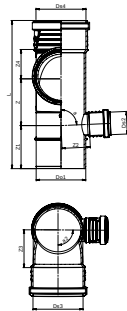
SiTech+ Shower Branch 87,5°

DN/OD mm	Article code	Do1=Ds3 mm	Ds2 mm	Z mm	Z1 mm	Z2 mm	Z3 mm	Z4 mm
90x90x50	3071186	90	50	94	87	53	74	52
110x110x50	3071187	110	50	105	96	63	79	64



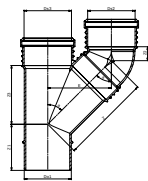
SiTech+ Branch Shower left 87,5°

DN/OD mm	Article code	Do1=Ds3 mm	Ds2 mm	Z mm	Z1 mm	Z2 mm	Z3 mm	Z4 mm
90x90x50	3071186	90	50	91	96	53	74	52
110x110x50	3071187	110	50	111	96	63	79	64



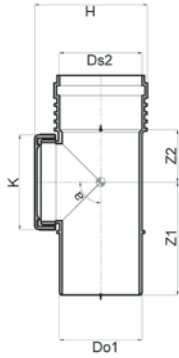
SiTech+ Branch Shower right 87,5°

DN/OD mm	Article code	Do1=Ds3 mm	Ds2 mm	Z mm	Z1 mm	Z2 mm	Z3 mm	Z4 mm
90x90x50	3071186	90	50	91	96	53	74	52
110x110x50	3071187	110	50	111	96	63	79	64



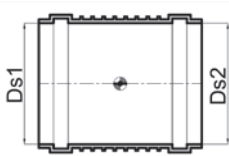
SiTech+ Parallel Branch

DN/OD mm	Article code	Do1=Ds3 mm	Ds2 mm	Z mm	Z1 mm	Z2 mm	Z3 mm	E mm
110x110x110	3074400	110	110	221	108	32	137	149



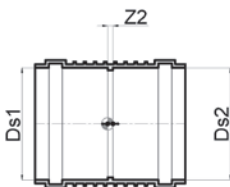
SiTech+ Access pipe S/SP

DN/DO mm	Article code	Do1 mm	Z1 mm	Ds2 mm	Z2 mm	H mm	K mm
50	3067784	50	83	50	36	80	65
75	3067785	75	102	75	50	111	93
90	3067786	90	118	90	60	132	110
110	3067787	110	135	110	72	155	128
125	3067788	125	142	125	74	162	146
160	3074215	160	200	160	121	236	141



SiTech+ Repair Coupler S/S

DN/DO mm	Article code	Ds1=Ds2 mm
40	3067790	40
50	3067791	50
75	3067792	75
90	3067793	90
110	3067794	110
125	3067795	125
160	3067796	160



SiTech+ Double Socket Coupler S/S

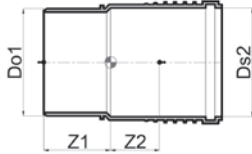
DN/DO mm	Article code	Ds1=Ds2 mm
32	3067797	32
40	3067798	40
50	3067799	50
75	3067800	75
90	3067801	90
110	3067802	110
125	3067803	125
160	3067804	160



SiTech+ Floorgully

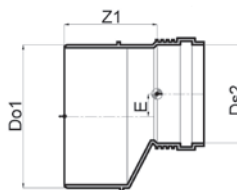
DN/DO mm	Article code	Do1=Ds3 mm	Ds2=Ds4 mm	Ds3=Ds5 mm
110/75/50	3086119 3086121*	110	75	50

*Sparepart Bulkhead for Floorgully



SiTech+ Double Long Socket S/SP

DN/OD mm	Article code	Do1=Ds2 mm	Z1 mm	Z2 mm
40	3074798	40	50	53
50	3074809	50	52	56
75	3074810	75	59	64
90	3085677	90	63	70
110	3067809	110	152	79
125	3074812	125	171	91
160	3074813	160	187	99



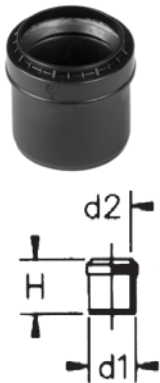
SiTech+ Reducer TYPE A

DN/OD mm	Article code	Do1 mm	Ds2 mm	Z1 mm	E mm
40x32	3067812	40	32	60	3
50x32	3067813	50	32	66	9
50x40	3067814	50	40	63	5
75x50	3067815	75	50	77	12
110x50	3067816	110	50	106	27
110x75	3067817	110	75	98	17
125x110	3067818	125	110	98	7
160x110	3067819	160	110	121	24
160x125	3067820	160	125	117	16



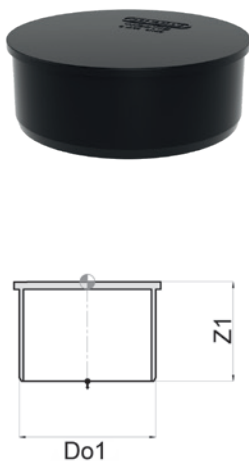
SiTech+ Reducer short TYPE B

DN/OD mm	Article code	Do1 mm	Ds2 mm	Z1 mm	E mm
90x50	3067821	90	50	27	17
90x75	3067822	90	75	22	4
110x50	3076497	110	50	23	7
110x75	3076496	110	75	24	9
110x90	3067823	110	90	26	6



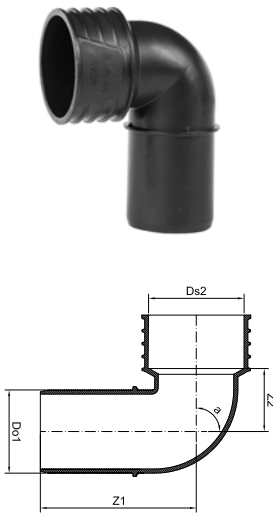
SiTech+ PP Reducer

DN/OD mm	Article code	Do1 mm	Ds2 mm	H mm
940x32	3072601	40	32	65
50x40	3080421	50	40	55



SiTech+ Endcap

DN/OD mm	Article code	Do1 mm	Z1 mm
32	3080961	32	45
40	3067824	40	47,5
50	3067825	50	48,5
75	3067826	75	54,5
90	3067827	90	37,4
110	3067828	110	69,5
125	3067829	125	69
160	3067830	160	98,2



SiTech+ Trap bend

DN/OD mm	Article code	Do1 mm	Ds2 mm	Z1 mm	Z2 mm
32/46	3067841	32	46	70	24
40/46	3078802	40	46	79	30
50/53	3078803	50	53	79	35
40/46 prolonged	3078804	40	46	125	30



SiTech+ Trap coupler

DN/OD mm	Article code	Do1 mm	Ds2 mm	Z1 mm
32/46	3067843	32	46	52
40/46	3067844	40	46	54
50/53	3067845	50	53	55



Rubber for Traps

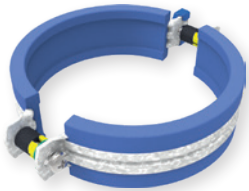
DN/OD mm / inch	Article code	Do1 mm	Ds2 inch
46 - 1"	4026398	46	1"
46 - 1 1/4"	4026399	46	1 1/4"
46 - 1" / 1 1/4"	4009859	46	1" / 1 1/4"
46 - 1 1/2"	4009860	46	1 1/2"
53 - 1" / 1 1/4"	4024657	53	1" / 1 1/4"
53 - 1 1/2"	4024658	53	1 1/2"



Gasket

DN/OD **Article code**
mm

32	4029792
40	4029793
50	4025545
75	4025784
90	4024428
110	4029796
125	4024430
160	4029798



Wavin system bracket

DN/OD **Article code**
mm

32	4066447
40	4066448
50	4066449
75	4066450
90	4066451
110	4066452
125	4066453
160	4066454



Firecollar BM-R90

DN/OD **Article code**
mm

32	4059802
40	4026101
50	4026102
63	4026103
75	4026104
90	4026105
110	4026106
125	4026107
140	4026108
160	4026109
180	4026110
200	4026111



Wavin LKS-Clamp

DN/OD **Article code**
mm

32	4048918
40	4048917
50	4065138
70	4065139
90	4065140
110	4065141
125	4065142
160	4065143

Discover our broad portfolio at wavin.com

- Water management
- Heating and cooling
- Water and gas distribution
- Waste water drainage



Wavin is part of Orbia, a community of companies working together to tackle some of the world's most complex challenges.

We are bound by a common purpose:
To Advance Life Around the World.

Wavin SEA | Internet www.wavin.com/asia | E-mail wavinsea@wavin.com



Wavin operates a programme of continuous product development, and therefore reserves the right to modify or amend the specification of their products without notice. All information in this publication is given in good faith, and believed to be correct at the time of going to press. However, no responsibility can be accepted for any errors, omissions or incorrect assumptions.

© 2023 Wavin Wavin reserves the right to make alterations without prior notice. Due to continuous product development, changes in technical specifications may change. Installation must comply with the installation instructions.