

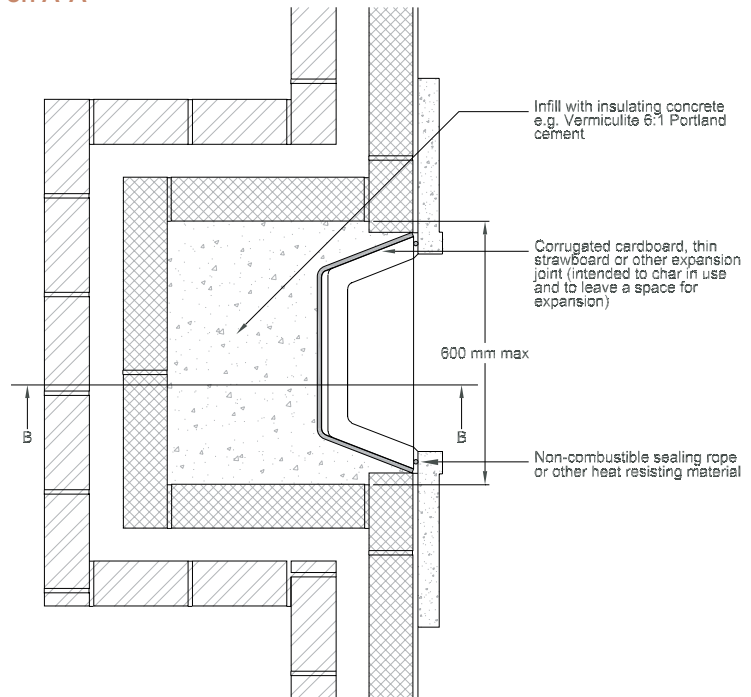
Fireback Installation

Hepworth

TERRACOTTA

- Construct the fireplace recess to the required dimensions to correctly support the fireplace lintel.
- Separate the upper and lower sections of the fireback along the scored groove, using a masonry saw or hammer and chisel.
- Insert the lower section of the fireback into the fireplace recess with the front level with the front of the builders opening. Place corrugated cardboard or thin strawboard against the rear and sides of the fireback (intended to char in use and to leave an expansion gap).
- Infill the gap behind the fireback with insulating concrete (e.g. Vermiculite 6:1 Portland cement).
- Place non-combustible rope along the top edge of the lower section of fireback. Place the upper section on top of the lower, preferably set back by 1.5 to 2 mm. Point up the joint with fire cement.
- Infill the gap with insulating concrete behind the upper section (no expansion gap required).
- Place the fireplace lintel in position on a mortar bed (rake out and point with fire cement where exposed directly to heat).
- Seal the front edge of the fireback to the fireplace surround using non-combustible rope.
- Allow at least 48 hours for fireback to dry out before lighting a fire. Longer in winter.
- Only small fires of short duration should be burnt for the first few days to help prevent cracking.

Section on A-A



Section on B-B

