

With TUPLAIMUBOX quick coupling box oil separators and grease separators installed indoors can be emptied from the outside.
 TUPLAIMUBOX is made of stainless steel and includes 2 pcs spherical $\varnothing 88,9$ claw couplers (HFe, SFS 4428) and also 2 pcs Zn-couplers. On the inner surface of the hinged cover are instructions for emptying the separator.

EMPTYING, OPERATION AND MAINTENANCE INSTRUCTIONS FOR THE SEPARATOR (INDOOR INSTALLATION MODEL):

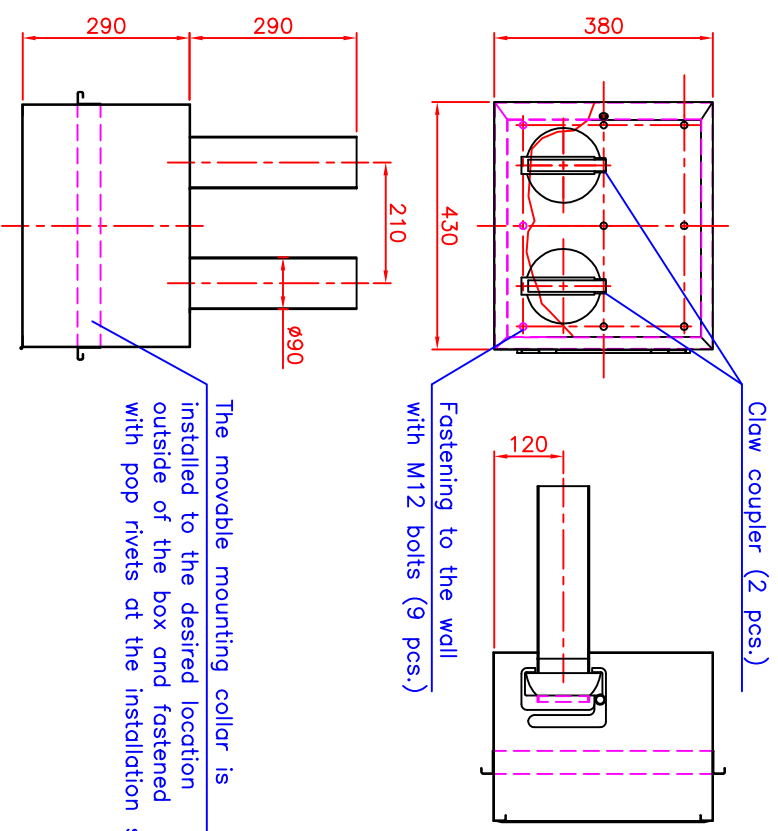
In case the separator can't be installed in to the ground outside the building (i.e. renovation sites or premises where is no free land area available), the separator can be installed indoors. Separators equipped with two suction pipes are drained either the whole storage volume at a time from the bottom the tank (grease separators) or one pipe drains the oil layer (hazardous waste) from the bottom the tank (oil separators).
 TUPLAIMUBOX quick coupling box should be installed to a place where it is easily accessible for the emptying truck.

The separator should be installed in an air-conditioned room where it can be maintained through a manhole. For successful maintenance it is recommended to place the separator close to a hot water hose connection point, which can be used to clean the dirt from separator walls and bottom. Removing dried and solidified grease requires special attention. Cleaning operation through a manhole must be done at least once a year. The room where the separator is installed must be sewerd. Indoor installation requires a gas tight cover.

Notes:

This drawing and the technical information included in the drawing are property of Wavin-Labko. All the national regulations concerning this product have to be checked before purchase of the product. Installation have to be done according to installation manual.

Approved by customer: _____ / _____ 201_____



| | | | | |
|------------|--------------------------------|--------------|--------------------|------------------|
| Wavin no. | Title: | | | Drawing type |
| Design by: | TUPLAIMUBOX Quick coupling box | | | CUSTOMER DRAWING |
| TP/TL | Checked by: | Approved by: | Drawing no. | page: |
| | HT | 06.07.15 | 98BB01be | 1 / 1 |
| | | | | Date: |
| | | | | 06.07.15 |
| | | | Construction site: | Scale: |

WAVIN
Labko

WAVIN-LABKO
 Visiokatu 1
 FIN-33720 Tampere
 FINLAND
 Tel. +358-20-1285 200
 Fax +358-20-1285 280
 www.wavin-labko.fi