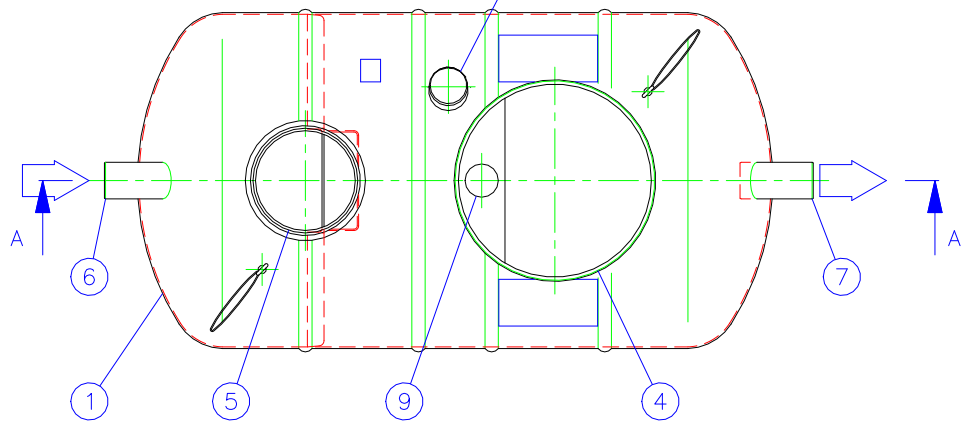
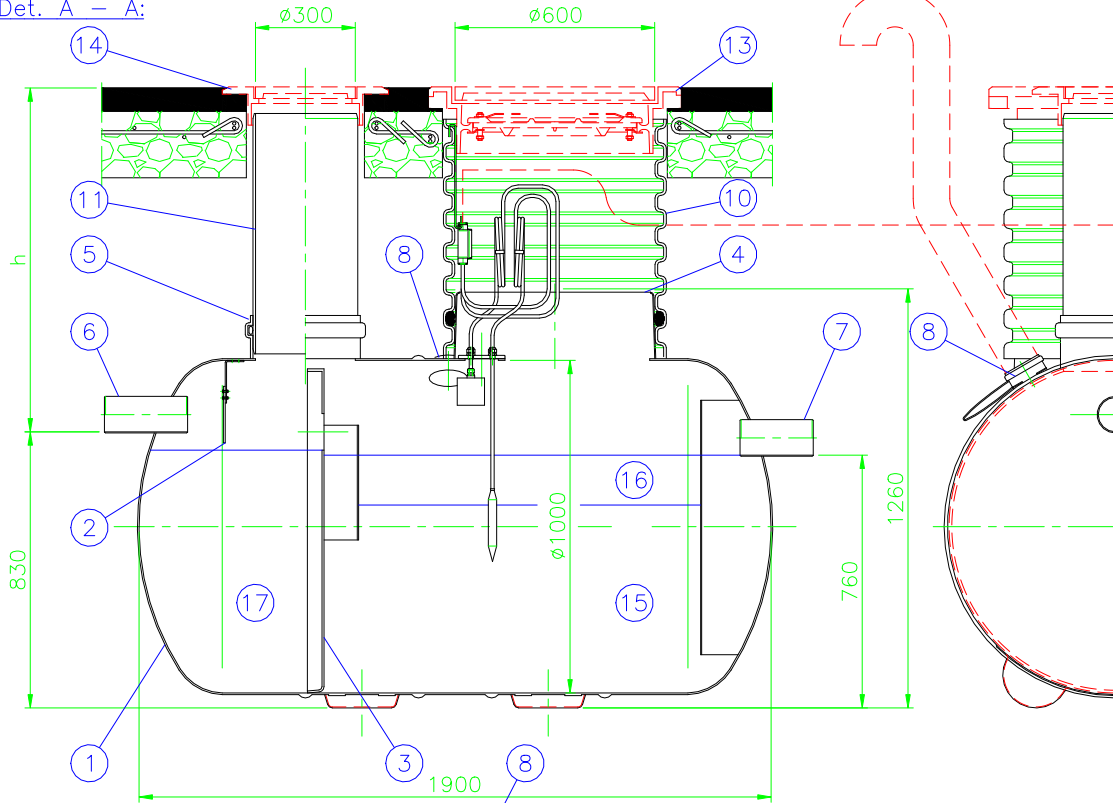
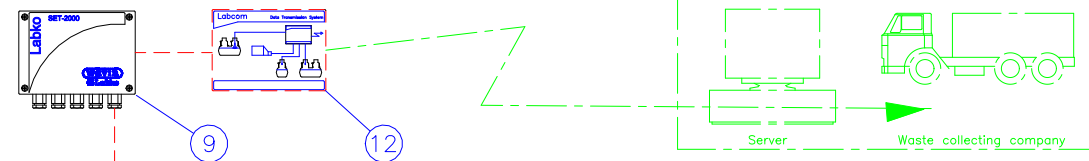


Det. A - A:



h=installation depth of separator from ground level (mm)
 h= _____ mm

Flow rate of water to determine the size of the separator: _____ l/s



				Maximum flow rate: 2 l/s	
17	Sludge storage capacity			280 l	
16	Grease storage capacity			175 l	
15	Effective capacity			570 l	
14	ACCESSORY: Floating adjustable cast iron cover \varnothing 300				
	Cover C250 (25 tn) (x)	<input type="checkbox"/>			
	Cover D400 (40 tn)	<input type="checkbox"/>			
	Frame	<input type="checkbox"/>			
13	ACCESSORY: Floating adjustable cast iron lid set \varnothing 600 including an inner cover with a lock				
	Cover A15 (1.5 tn) (x)	<input type="checkbox"/>			
	Cover C250 (25 tn)	<input type="checkbox"/>			
	Cover D400 (40 tn)	<input type="checkbox"/>			
	Frame (without a structure for the inner cover) (x)	<input type="checkbox"/>			
	Frame for two covers (also for the inner cover)	<input type="checkbox"/>			
	Lockable inner cover (gas proof)	<input type="checkbox"/>			
12	ACCESSORY: LABCOM Data Transfer Unit (x)	<input type="checkbox"/>			
11	ACCESSORY: PVC 315 drain/maintenance pipe, material: PVC h=installation depth of separator from ground level (Max. 2500 mm)				
	PVC 315 h 9-13 (x)	<input type="checkbox"/>		h= 900...1300 mm	
	PVC 315 h13-17	<input type="checkbox"/>		h=1300...1700 mm	
	PVC 315 h17-21	<input type="checkbox"/>		h=1700...2100 mm	
	PVC 315 h21-25	<input type="checkbox"/>		h=2100...2500 mm	
10	ACCESSORY: PP-HUK 600 maintenance shaft, material: PP (\varnothing 602/670) h=installation depth of separator from ground level (Max. 2500 mm)				
	PP-HUK 600 h 9-13 (x)	<input type="checkbox"/>		h= 900...1300 mm	
	PP-HUK 600 h13-17	<input type="checkbox"/>		h=1300...1700 mm	
	PP-HUK 600 h17-21	<input type="checkbox"/>		h=1700...2100 mm	
	PP-HUK 600 h21-25	<input type="checkbox"/>		h=2100...2500 mm	
9	SET-2000 Grease alarm unit with SET DM/3 and SET/OE2 probes				1
8	Ventilation outlet (as needed)	PVC	Dy110		1
7	Outlet sewer	PVC	Dy110		1
6	Inlet sewer	PVC	Dy110		1
5	PVC 315 installation sleeve	PVC	Dy315		1
4	PP-HUK 600 installation sleeve	GRP	D600		1
3	Separation wall	GRP	D1000		1
2	Baffle plate	GRP			1
1	Glass Reinforced Plastic (GRP) "Lasa composit", \varnothing 1000 L=1900 mm pH3-10, temperature endurance 80°C				1

Product:	Title: EuroFAM NS2 Grease separator with sludge part	Drawing type CUSTOMER DRAWING
Design by: TIS/JS	Checked by:	Approved by: TJ 28.11.05
	Drawing no. 32CB04_e	Date: 28.11.05
	Scale:	

WAVIN-LABKO Ltd.
 Labkotie 1
 FIN-36240 KANGASALA
 FINLAND
 Tel. +358-020-1285 200
 Fax +358-020-1285 280

Construction site:

This drawing and the technical information included in the drawing are property of Wavin-Labko Ltd. This drawing can not be shown to a third party without the consent of Wavin-Labko Ltd.

Approved by customer:
 _____ / _____. 200_____

