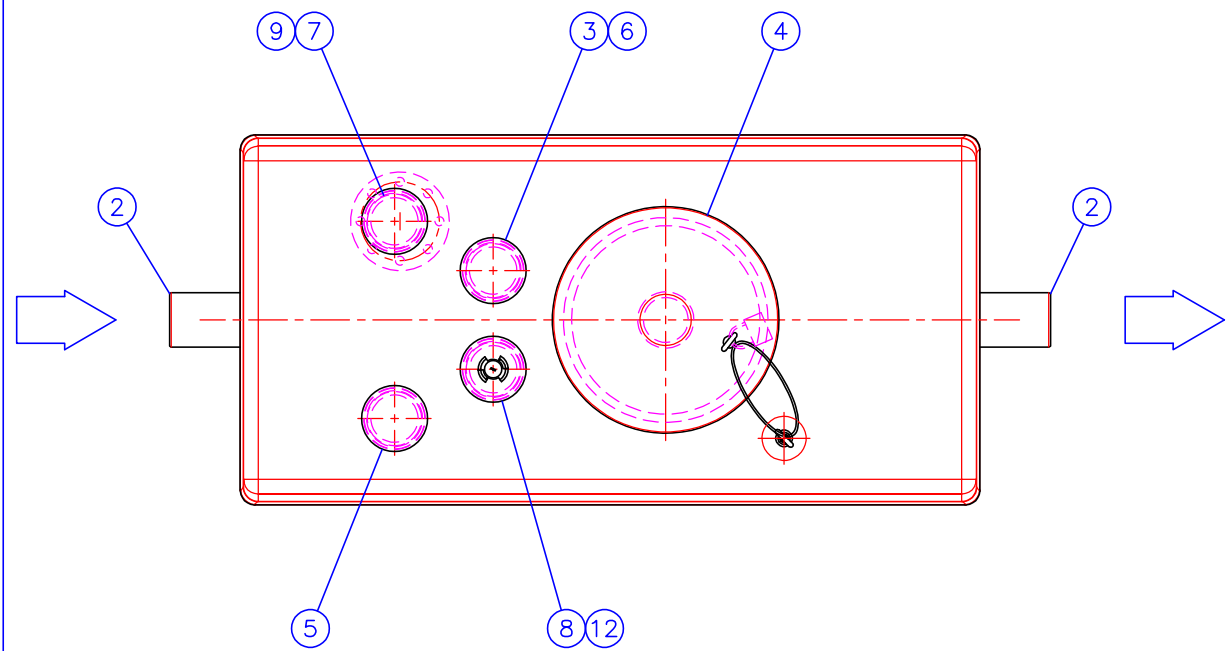



Indoor installation model (On the floor)



1	EuroREK NS2 SL GRP grease separator (EN1825), Indoor installation model Nominal size NS 2 l/s GRP body (750x1180, L=1500 mm) pH 3-10/Heat endurance continued 60°C (temporary max. 80°C)	1	
	V Total volume	980 l	
	Vg Grease storage capacity	80 l (H=100 mm)	
	Vs Sludge storage capacity	200 l	
2	Inlet / Outlet sewer	D110	1/1
3	Grease alarm		1
4	Maintenance hole with odourproof cover	ø454/382 mm	1
5	Ventilation outlet	D110	1
6	Inlet for probes	D110	1
7	Inlet for Emptying pipe	D110	1
8	Inlet for Washing nozzle	D110	1

ACCESSORIES:			
9	Emptying pipe with flange, PVC, DN80	(x)	<input type="checkbox"/>
10	Imubox quick coupling box for 1 pc. DN80 Suction pipes	(x)	<input type="checkbox"/>
11	Data Transfer Unit	(x)	<input type="checkbox"/>
12	Washing nozzle	(x)	<input type="checkbox"/>

Title: EuroREK NS2 SL GRP Grease separator (EN1825)			Drawing type CUSTOMER DRAWING	
Design by: HT/JS	Approved by: HT 08.05.2018	Drawing no. 32BB01ae	Date: 08.05.2018	Scale:

	Construction site:		WAVIN-LABKO Ltd. VISIOKATU 1 FIN-33720 TAMPERE FINLAND tel. +358 20 1285200 fax. +358 20 1285280

This drawing and the technical information included in the drawing are property of Wavin-Labko. All the national regulations concerning this product have to be checked before purchase of the product. Installation have to be done according to installation manual.