

Wavin AS+
Product Guide

Low noise soil & waste drainage



wavin

orbia 

1. Wavin AS+

1.1. System description

With regards to noise, Wavin is one of the pioneers. More than 30 years ago Wavin introduced the world's first plastic low noise Soil & Waste system.

After serving its purpose for more than 30 years, Wavin is introducing the successor of Wavin AS and is setting a new standard for low noise Soil & Waste solutions.

Wavin AS+ is the new best in class plastic sound-insulating Soil & Waste piping system, suitable for drainage of hot and cold waste water and in accordance with all requirements for non-pressurized waste water piping as laid down in DIN EN 12056 and DIN 1986-100.

Wavin AS+ reduces the noise level of the Soil & Waste system better than any other plastic pipe system.

Due to the unique material composition for improved noise performance, premium reduction of unwanted sound emissions by the drainage system inside the building is assured. Optimal sound reduction is guaranteed due to high density of material.

Wavin AS+ is a mineral reinforced polypropylene (PP) low noise soil and waste solution.

Wavin AS+ is available in sizes ranging from DN50 to DN200.

Like all plastics, Wavin AS+ is durable, corrosion-resistant and able to withstand the chemical attack of all kinds of aggressive waste waters.

Although the system has been primarily designed as sound-insulating Soil & Waste solution, Wavin AS+ is also approved for underground as far as the main sewer connecting point.

Supported by the DIN EN 12056 and DIN 1986-100 waste water norms, which further endorse DN90 downpipe specifications – from the individual waste water sources (facilities) right up to the main drain cleaning access point or the main sewage connecting point.

The new Wavin AS+ has been designed to meet the needs of engineers and installers. On top of 30 years of experience, we spent over a hundred thousand hours on noise level testing, explored new materials and invested heavily in developing a seal with integrated lubricant. This is why we can confidently say that the ultimate noise reduction and super easy installation delivered by the new Wavin AS+ is no coincidence.

Wavin AS+ includes unique product features that are contributing to the ease and safety of an installation:

- ▶ New patented blue seal with integrated lubricant
- ▶ Sculptured spigot reduces push-in force with 50% compared to Wavin AS
- ▶ Blue seal's shape guarantees leak-free, failure-proof installation
- ▶ Unique material composition delivers perfect sound absorption
- ▶ Angular rotation guidance to align and rotate fittings in the right direction
- ▶ Insertion depth check on fittings to make a secure and safe connection
- ▶ Better handling during installation due to the grip features
- ▶ Compact design perfect for small and narrow spaces

Sealing

The elastomeric seal is made from EPDM in conformity with EN681-1.

Approvals and testing

Wavin AS+ pipes and fittings are continually subject to strict quality controls according to DiBt in Berlin. Wavin AS+ pipes & fittings have been awarded DiBt buildings' inspection approval (DiBt Z-42.1-569) and are, therefore, deemed suitable for use as above and below-ground pipework. Germany: DiBt, Z.-42.1-569

1.2. Field of application

Areas of application

Wavin AS+ is resistant to hot water and fulfills or exceeds all the requirements of DIN EN 12056 and the associated norms given in DIN 1986-100, i.e. short-term exposure to temperatures of 95°C and long-term exposure to temperatures of 90°C.

The chemical resistance of Wavin AS+ makes it suitable for transporting waste water in the range pH 2 - 12.

Wavin AS+ is suitable for building, roof and below ground drainage purposes.

The outstanding acoustic performance of WAVIN AS+ makes it ideal for wherever DIN 4109-compliant sound insulation might be required, such as in hospitals, hotels, nursing homes, office buildings, or single/multi-occupancy residential properties.

Noise pollution affects both health and behavior.

Exposure to noise can effect both health and behavior. Unwanted sound (noise) can damage physiological health. It can cause hypertension, high stress levels, tinnitus, hearing loss, sleep disturbances, and other harmful effects. It is for this reason that modern buildings are equipped with a range of sound-insulation measures designed to favour comfortable living, such as thick exterior walls and soundproofed windows. But we often forget that noise is not just external; it can also be generated from inside the building. Wavin wants to create better buildings. Wavin AS+ is a premium-quality, sound-insulating pipe system designed to minimise noise from plumbing systems and maximise living comfort.

Commercial kitchens and abattoirs

Wavin AS+ is ideal draining fat-containing waste water from e.g. commercial kitchens and abattoirs. Long-term functional reliability and temperature resistance (continuous exposure up to 90°C / short-term up to 95°C in accordance with DIN EN 12056 / DIN 1986-100) are fundamental requirements here. The smooth internal surface of the pipe prevents incrustations. When installing Wavin AS+ in commercial kitchen and abattoirs with high fat-containing waste water, the use of NBR sealing rings is advised. If fat-containing waste waters need to cover a long distance before reaching the grease-trap facilities, the premises have to be equipped with an auxiliary electric

heating system designed to keep the waste water in a liquid state, while maintaining a temperature of no more than 70°C.

Photographic laboratories

Wavin AS+ pipes and fittings – made of mineral-reinforced PP and supplied with factory-fitted sealing rings – are resistant to the developing and fixing media used in photographic laboratories over long-term exposures at 60°C. They are also approved for short-term temperature loads of up to 95°C. (Please refer to the Chemical Resistance List in the annex for further details).

It is recommended that piping is installed with sufficient fall to reduce the contact time between fluid and guiding surface to a minimum.

Dental practices

Wavin AS+ can be used unreservedly in dental practices, provided the piping downstream of the dentist's chair is fitted with an integrated amalgam separator. Wavin AS+ (including the sealing rings) is resistant to dental amalgam. In addition, cleaning agents and disinfectants normally used in dental practices, if present in the usual concentrations, are harmless to the pipe system.

Food-processing and chemical industries

Usage with waste water containing lactic acid from the food sector and chemical industry, Wavin AS+ pipes and fittings are resistant to media containing lactic acid (at concentrations up to 90%) at liquid temperatures up to 60°C. This also applies to the factory-fitted EPDM sealing ring that form part of the push-fit connecting system, especially as contact is marginal. It is recommended that piping is installed with sufficient fall to reduce contact time to a minimum.



2. Technical Datasheet

Wavin AS+

Wavin AS+ is a mineral reinforced polypropylene (PP) low noise soil and waste solution. A unique material composition for improved noise performance. Optimal sound reduction is guaranteed due to high density of material. Optimized three layer pipe structure for low noise levels push fit connections with a prelubricated elastomer seal (EPDM) for quick, easy and reliable installation.

Material

Polypropylene, mineral-reinforced.

Physical properties

- Density
- E-Modul
- Linear coefficient of thermal expansion
- Reaction to fire
- Temperature

According to DiBt approval

~ 1800 N/mm²

~ 0,06 mm/mK

DIN 4102, B2 and EN13501 D-S3, d0

Short-time load by 95°C und 90°C long-term stress

Color

Light grey RAL7035

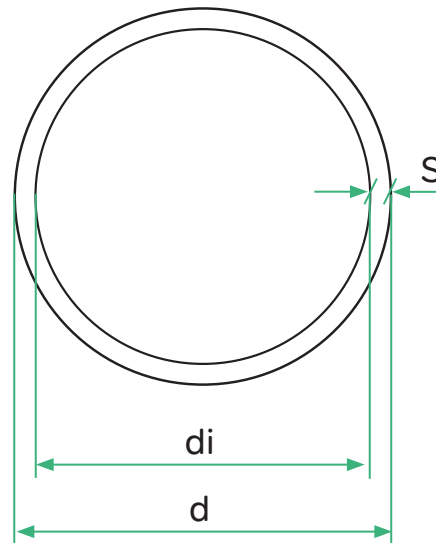
Pipe data

d ¹⁾	DN	di ²⁾	s ³⁾
DN/OD			
50	50	44	3,0
75	70	68	3,5
90	90	80,8	4,6
110	100	99,4	5,3
125	125	114,4	5,3
160	150	148,8	5,6
200	200	188	6,0

¹⁾ Outside diameter in mm

²⁾ Maximum Inside diameter in mm

³⁾ Minimum wall thickness in mm



Marking

Wavin AS+, nominal width, date, certification mark, material, fire class

Example: Wavin AS+, DN100, date, Z.-42.1-569, mineral-reinforced PP Ü DIN 4102, B2

8. Wavin AS+ product range

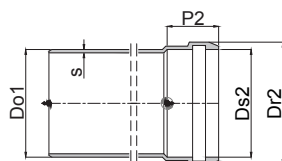
	DN/OD DN	50 50	75 70	90 90	110 100	125 125	160 150	200 200
Pipe		✓	✓	✓	✓	✓	✓	✓
Double Socket Coupler		✓	✓	✓	✓	✓	✓	✓
Bend		✓	✓	✓	✓	✓	✓	✓
Long bend				✓	✓			
Trap bend		✓						
Trap straight		✓						
Branch		✓	✓	✓	✓	✓	✓	✓
Double branch				✓	✓			
Corner branch				✓	✓			
Parallel branch				✓	✓			
Combination branch					✓			
Shower branch				✓	✓			
Double socket sleeve		✓	✓	✓	✓	✓	✓	✓

	DN/OD DN	50 50	75 70	90 90	110 100	125 125	160 150	200 200
Long socket		✓	✓	✓	✓	✓	✓	✓
Socket Plug		✓	✓	✓	✓	✓	✓	✓
Reducer			✓	✓	✓	✓	✓	✓
Access Pipe		✓	✓	✓	✓	✓	✓	✓
Bracket		✓	✓	✓	✓	✓	✓	✓
Covering Clamp type LKS		✓	✓	✓	✓	✓	✓	✓
Gasket EPDM		✓	✓	✓	✓	✓	✓	✓
Gasket NBR		✓	✓	✓	✓	✓	✓	✓
Gasket rubber for Siphon 1 1/2" 53 mm								
Gasket rubber for Siphon 1 1/4" 53 mm								
BM-R90		✓	✓	✓	✓	✓	✓	✓
EPDM Flex coupler for connecting AS with AS+		✓	✓			✓		

Wavin AS+ product range

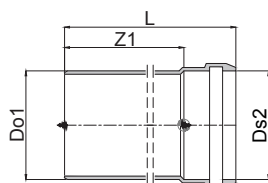
PIPE

Pipe



DN/OD mm	DN mm	Outer diameter Do1 = Ds2	Wallthickness s	Length of socket P2
50	50	50	3,0	46
75	70	75	3,5	51
90	90	90	4,6	55
110	100	110	5,3	59
125	125	125	5,3	63
160	150	160	5,6	71
200	200	200	6,0	86

Wavin AS+ Pipe with socket



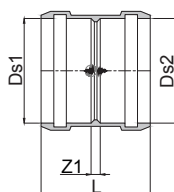
DN/OD mm	DN mm	Article Nr.	Do1 mm	L mm	Ds2 mm	Z1 mm	Weight kg/PC
50	50	3080057	50	198	50	150	0,18
50	50	3080058	50	298	50	250	0,26
50	50	3080059	50	546	50	500	0,44
50	50	3080060	50	1046	50	1000	0,83
50	50	3080061	50	2046	50	2000	1,61
50	50	3080062	50	2746	50	2700	2,15
50	50	3080063	50	3046	50	3000	2,38
75	70	3080064	75	202	75	150	0,30
75	70	3080065	75	302	75	250	0,44
75	70	3080066	75	551	75	500	0,79
75	70	3080067	75	1051	75	1000	1,49
75	70	3080068	75	2051	75	2000	2,90
75	70	3080069	75	2751	75	2700	3,88
75	70	3080070	75	3051	75	3000	4,30
90	90	3080071	90	205	90	150	0,47
90	90	3080072	90	305	90	250	0,69
90	90	3080073	90	554	90	500	1,25
90	90	3080074	90	1054	90	1000	2,37
90	90	3080075	90	2054	90	2000	4,60
90	90	3080076	90	2754	90	2700	6,16
90	90	3080077	90	3054	90	3000	6,83
110	100	3080030	110	209	110	150	0,68
110	100	3080031	110	309	110	250	1,02
110	100	3080032	110	559	110	500	1,83
110	100	3080033	110	1059	110	1000	3,41



DN/OD mm	DN mm	Article Nr.	Do1 mm	L mm	Ds2 mm	Z1 mm	Weight kg/PC
110	100	3080034	110	2059	110	2000	6,56
110	100	3080035	110	2759	110	2700	8,77
110	100	3080036	110	3059	110	3000	9,72
125	125	3080037	125	213	125	150	0,79
125	125	3080038	125	313	125	250	1,16
125	125	3080039	125	562	125	500	2,09
125	125	3080040	125	1062	125	1000	3,90
125	125	3080041	125	2062	125	2000	7,50
125	125	3080042	125	2762	125	2700	10,03
125	125	3080043	125	3062	125	3000	11,11
160	150	3080044	160	221,4	160	150	1,09
160	150	3080045	160	321,4	160	250	1,09
160	150	3080046	160	570,2	160	500	2,87
160	150	3080047	160	1070	160	1000	5,33
160	150	3080048	160	2070	160	2000	10,27
160	150	3080049	160	2770	160	2700	13,73
160	150	3080050	160	3070	160	3000	15,21
200	200	3080051	200	328	200	250	2,05
200	200	3080052	200	584	200	500	4,15
200	200	3080053	200	1084	200	1000	7,49
200	200	3080054	200	2084	200	2000	14,17
200	200	3080055	200	2784	200	2700	18,85
200	200	3080056	200	3084	200	3000	20,86

FITTINGS

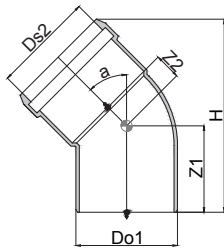
Wavin AS+ Double socket coupler



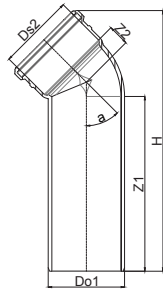
DN/OD mm	DN mm	Article Nr.	LDs1 mm	Ds2 mm	Z1 mm	Weight kg/PC
50	50	3080016	99	50	3	0,11
75	70	3080017	107	75	3	0,15
90	90	3080018	114	90	3	0,24
110	100	3080012	124	110	5	0,36
125	125	3080013	132	125	5	0,47
160	150	3080014	148	160	5	0,68
200	200	3080015	181	200	8	1,22



Wavin AS+ Bend > 15°, 30°, 45°, 67°, 87°

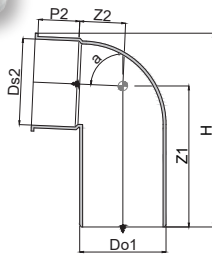


DN/OD mm	DN mm	a	Article Nr.	Do1 mm	Ds2 mm	Z1 mm	Z2 mm	h mm	Weight kg/PC
50	50	15°	3079965	50	50	53	11	115	0,10
50	50	30°	3079966	50	50	57	13	122	0,10
50	50	45°	3079967	50	50	60	18	126	0,11
50	50	67°	3079968	50	50	68	23	124	0,12
50	50	87°	3079969	50	50	74	32	111	0,13
75	70	15°	3079970	75	75	59	11	129	0,17
75	70	30°	3079971	75	75	64	15	141	0,18
75	70	45°	3079972	75	75	70	21	150	0,19
75	70	67°	3079973	75	75	79	29	150	0,21
75	70	87°	3079974	75	75	90	41	141	0,23
90	90	15°	3079975	90	90	64	15	141	0,28
90	90	30°	3079976	90	90	70	20	157	0,30
90	90	45°	3079977	90	90	73	25	167	0,32
90	90	67°	3079978	90	90	88	37	172	0,36
90	90	87°	3079979	90	90	101	49	160	0,39
110	100	15°	3079950	110	110	70	17	157	0,42
110	100	30°	3079951	110	110	77	20	177	0,46
110	100	45°	3079952	110	110	85	32	192	0,50
110	100	67°	3079953	110	110	99	44	197	0,56
110	100	87°	3079954	110	110	114	61	186	0,63
125	125	15°	3079955	125	125	75	17	167	0,52
125	125	30°	3079956	125	125	83	25	191	0,59
125	125	45°	3079957	125	125	92	34	208	0,64
125	125	87°	3079958	125	125	126	67	206	0,80
160	150	15°	3079959	160	160	85	19	189,5	0,79
160	150	30°	3079960	160	160	96	28	-	0,88
160	150	45°	3079961	160	160	108	42	-	0,09
160	150	87°	3079962	160	160	151	84	-	1,26
200	200	45°	3079963	200	200	132	51	296,2	1,66
200	200	87°	3079964	200	200	185	42	302,7	2,14



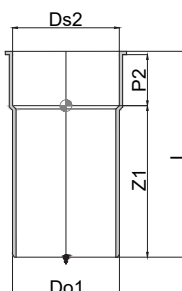
Wavin AS+ Long bend > 45°

DN/OD mm	DN mm	Article Nr.	Do1 mm	Ds2 mm	Z1 mm	h mm	Weight kg/PC
90	90	3080027	90	90	250	25	0,72
110	100	3080026	110	110	250	25	1,05



Wavin AS+ Trap

DN/OD mm	DN mm	a	Article Nr.	Do1 mm	Ds2 mm	Z1 mm	Z2 mm	h mm	Weight kg/PC
50	50	87°	3080101	50	53	79	35	123	0,05

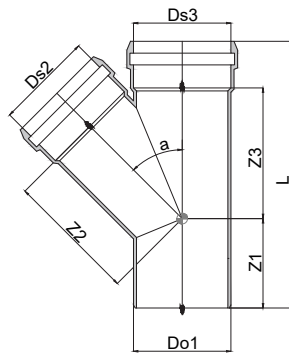


Wavin AS+ Trap straight

DN/OD mm	DN mm	a	Article Nr.	Do1 mm	Ds2 mm	Z1 mm	Z2 mm	h mm	Weight kg/PC
50	50		3080102	50	53	55	40	120	0,05



Wavin AS+ Branch > 45° and 87°



DN/OD mm	DN mm	a	Article Nr.	Do1 mm	L mm	Ds2 mm	Ds3 mm	Z1 mm	Z2 mm	Z3 mm	Weight kg/PC
50/50	50/50	45°	3079996	50	171	50	50	60	62	62	0,22
		87°	3079997	50	150	50	50	75	29	29	0,18
75/50	70/50	45°	3079998	75	178	50	75	52	82	78	0,31
		87°	3079999	75	158	50	75	78	42	30	0,27
75/75	70/70	45°	3080000	75	215	75	75	69	95	95	0,41
		87°	3080001	75	183	75	75	90	45	42	0,32
90/50	90/50	45°	3080002	90	185	50	90	55	93	77	0,45
		87°	3080003	90	186	50	90	82	52	30	0,40
90/75	90/70	45°	3080004	90	220	75	90	65	106	103	0,56
		87°	3080005	90	191	75	90	93	49	45	0,45
90/90	90/90	45°	3080006	90	243	90	90	76	114	114	0,70
		87°*	3080007	90	224	90	90	124	68	48	0,61
110/50	100/50	45°	3079982	110	197	50	110	59	106	81	0,63
		87°	3079983	110	178	50	110	85	59	36	0,57
110/75	100/70	45°	3079984	110	230	75	110	59	120	114	0,77
		87°	3079985	110	200	75	110	97	59	46	0,64
110/90	100/90	45°	3079986	110	249	90	110	69	128	123	0,90
		87°	3079987	110	216	90	110	105	60	55	0,73
110/110	100/100	45°	3079981	110	277	111	110	83	138	138	1,11
		87°*	3079980	110	253	110	110	136	77	56	0,96
125/110	125/100	45°	3079988	125	291	110	125	81	152	149	1,29
		87°	3079989	125	241	110	125	118	70	63	0,97
125/125	125/125	45°	3079990	125	310	125	125	91	158	158	1,47
160/110	150/100	45°	3079991	160	304	110	160	71	175	165	1,57
		87°	3079992	160	256	110	160	124	87	65	1,31
160/125	150/125	45°	3079993	160	326	125	160	82	184	176	1,99



DN/OD mm	DN mm	a	Article Nr.	Do1 mm	L mm	Ds2 mm	Ds3 mm	Z1 mm	Z2 mm	Z3 mm	Weight kg/PC
160/160	150/150	45°	3079994	160	375	160	160	108	200	199	2,32
200/200	200/200	45°	3079995	200	460	200	200	128	250	250	3,93

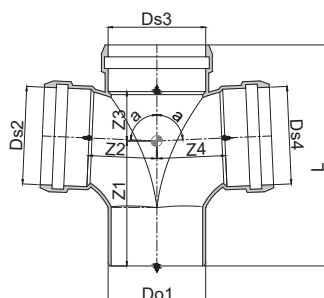
*with internal radius



Wavin AS+ Double branch > 87°

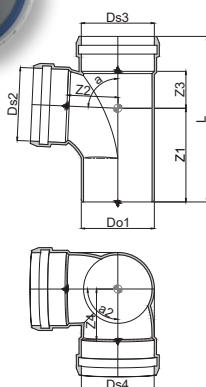
DN/OD mm	DN mm	a	Article Nr.	Do1 mm	L mm	Ds2 mm	Ds3 mm	Ds4 mm	Z1 mm	Z2 mm	Z3 mm	Z4 mm	Weight kg/PC
90/90/90*	90/90/90*		3080011	90	224	90	124	68	48				0,76
110/110/110*	100/100/100*		3080010	110	255	110	139	81	60				1,25

*with internal radius



Wavin AS+ Corner branch > 87°

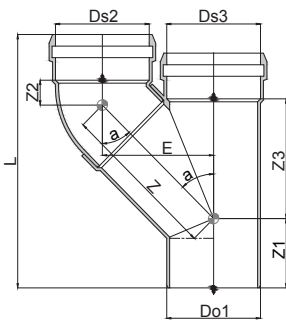
DN/OD mm	DN mm	a	Article Nr.	Do1 mm	L mm	Ds2 mm	Ds3 mm	Ds4 mm	Z1 mm	Z2 mm	Z3 mm	Z4 mm	Weight kg/PC
90/90/90*	90/90/90*	87	3080009	90	218	90	111	66	51	51			0,73
110/110/110*	100/100/100	87	3080008	110	251	110	122	139	128	139			1,04





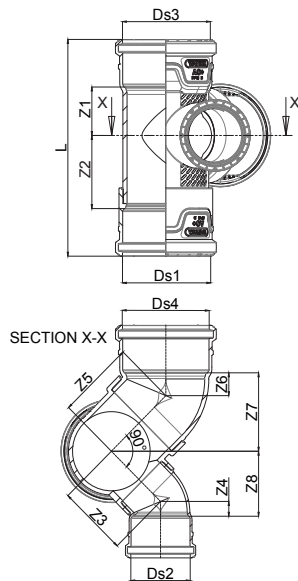
Wavin AS+ Paralell branch

DN/OD mm	DN mm	Article Nr.	Do1 mm	L mm	Ds2 mm	Z mm	Z1 mm	Z2 mm	Z3 mm	E mm	Weight kg/PC
90/90	90/90	3080029	90	260	90	151	74	25	118	105	092
110/110	100/100	3080028	110	303	110	186	87	32	145	130	1,51



Wavin AS+ Combi Branch

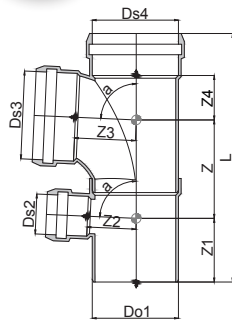
DN/OD mm	DN mm	Article Nr.	Ds1 mm	Ds4 mm	Ds2 mm	Z1 mm	Z2 mm	Z3 mm	Z4 mm	Z5 mm	Weight kg/PC
110/110/75	100/100/70	3080109	110	110	75	60	89	103	11	110	1,48





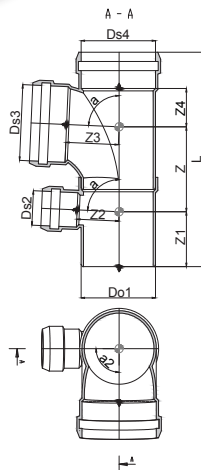
Wavin AS+ Showerdouble branch > 87°

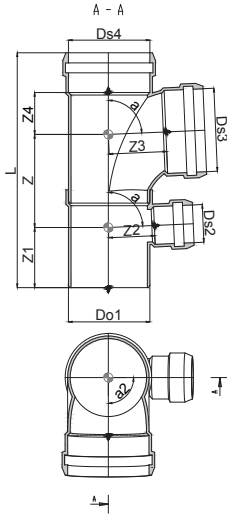
DN/OD mm	DN mm	Article Nr.	Do1 mm	L mm	Ds2 mm	Ds3 mm	Z mm	Z1 mm	Z2 mm	Z3 mm	Weight kg/PC
90/90/50	90/90/50	3080098	90	296	50	90	114	82	51	68	0,84
90/90/75	90/90/70	3080111	90	296	75	90	114	82	51	68	0,87
110/110/50	100/100/50	3080095	110	330	50	110	126	87	59	81	1,29
110/110/75	100/100/70	3080110	110	330	75	110	126	87	59	81	1,39



Wavin AS+ Showerdouble branch > 87° > left

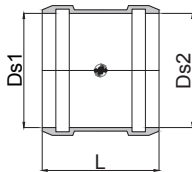
DN/OD mm	DN mm	Article Nr.	Do1 mm	L mm	Ds2 mm	Ds3 mm	Z mm	Z1 mm	Z2 mm	Z3 mm	Weight kg/PC
90/90/50	90/90/50	3080099	90	296	50	90	114	82	51	68	0,84
110/110/50	100/100/50	3080096	110	330	50	110	126	87	59	81	1,29





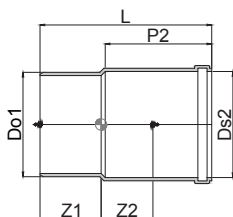
Wavin AS+ Showerdouble branch > 87° > right

DN/OD mm	DN mm	Article Nr.	Do1 mm	L mm	Ds2 mm	Ds3 mm	Z mm	Z1 mm	Z2 mm	Z3 mm	Weight kg/PC
90/90/50	90/90/50	3080100	90	296	50	90	114	82	51	68	0,84
110/110/50	100/100/50	3080097	110	330	50	110	126	87	59	81	1,29



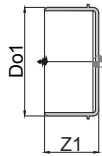
Wavin AS+ Repair coupler

DN/OD mm	DN mm	Article Nr.	L mm	Ds1 mm	Ds2 mm	Weight kg/PC
50	50	3080092	99	50	50	0,11
75	70	3080093	107	75	75	0,15
90	90	3080094	114	90	90	0,24
110	100	3080088	124	110	110	0,35
125	125	3080089	132	125	125	0,45
160	150	3080090	148	160	160	0,66
200	200	3080091	181	200	200	1,17



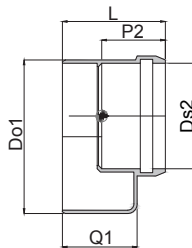
Wavin AS+ Long socket

DN/OD mm	DN mm	Article Nr.	Do1 mm	L mm	Ds2 mm	P2 mm	Z1 mm	Z2 mm	Weight kg/PC
50	50	3080023	50	184	50	105	57	60	0,16
75	70	3080024	75	199	75	129	62	66	0,25
90	90	3080025	90	202	90	125	66	92	0,39
110	100	3080019	110	219	110	137	69	88	0,58
125	125	3080020	125	237	125	148	74	79	0,75
160	150	3080021	160	264	160	164	85	123	1,09
200	200	3080022	200	425	200	184	199	130	2,54



Wavin AS+ End cap

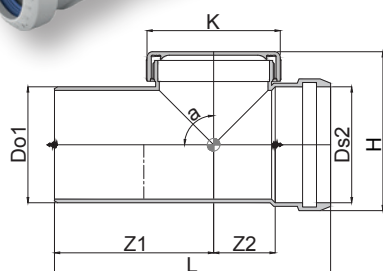
DN/OD mm	DN mm	Article Nr.	Do1 mm	Z1 mm	Weight kg/PC
50	50	3080106	50	51	0,05
70	70	3080107	75	55	0,10
90	90	3080108	90	60	0,17
110	100	3080103	110	65	0,27
125	125	3080104	125	68	0,33
160	150	3080105	160	76	0,52
200	200	3081792	200	128	1,03



Wavin AS+ Reducer

DN/OD mm	DN mm	Article Nr.	Do1 mm	L mm	Ds2 mm	P2 mm	Q1 mm	Weight kg/PC
75/50	70/50	3080085	75	79	50	48	68	0,14
90/50	90/50	3080086	90	86	50	19	72	0,21
90/75	90/70	3080087	90	85	75	52	72	0,18
110/50	100/50	3080078	110	90	50	53	79	0,33
110/75	100/70	3080079	110	90	75	57	79	0,31
110/90	100/90	3080080	110	91	90	61	78	0,28
125/110	125/100	3080081	125	99	110	59		0,34
160/110	150/100	3080082	160	114	110	59	98	0,64
160/125	150/125	3080083	160	114	125	63	98	0,63
200/160	200/150	3080084	200	130	160	24	114	0,94

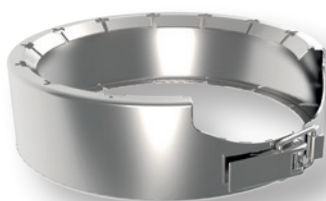
Wavin AS+ Access Piece



DN/OD mm	DN mm	a	Article Nr.	Do1 mm	L mm	Ds2 mm	Z1 mm	Z2 mm	K m	H mm
50	50		3079917	50	164	50	82	37	65	84
75	70		3079918	75	200	75	97	53	93	111
90	90		3079949	90	228	90	114	62	111	131
110	100		3079913	110	258	110	129	72	130	156
125	125		3079914	125	259	125	127	71	130	174
160	150		3079915	160	271	160	135	68	130	213
200	200		3079916	200	425	200	180	165	141	269

ACCESSORIES

Wavin AS+ LKS-Clamp



DN/OD mm	DN mm	Article Nr.
50	50	4065138
75	70	4065139
90	90	4065140
110	100	4065141
125	125	4065142
160	150	4065143
200	200	4065144

Gasket > EPDM

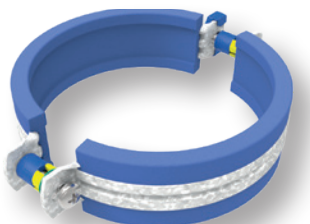


DN/OD mm	DN mm	Article Nr.
50	50	4065145
75	70	4065186
90	90	4065187
110	100	4065188
125	125	4065189
160	150	4065190
200	200	4065191



Gasket > NBR

DN/OD mm	DN mm	Article Nr.
50	50	4065192
75	70	4065193
90	90	4065194
110	100	4025566
125	125	4025567
160	150	4025568
200	200	4025569



Wavin system bracket

DN/OD mm	DN mm	Article Nr.
50	50	4066449
75	70	4066450
90	90	4066451
110	100	4066452
125	125	4066453
160	150	4066454
200	200	4066455



Rubber for traps

DN mm	Article Nr.
53 – 1¼"	4024657
53 – 1½"	4024658



Firecollar BM-R90

DN mm	Article Nr.
------------------	------------------------

32	4059802
40	4026101
50	4026102
63	4026103
75	4026104
90	4026405
110	4026106
125	4026107
140	4026108
160	4026109
180	4026110
200	4026111



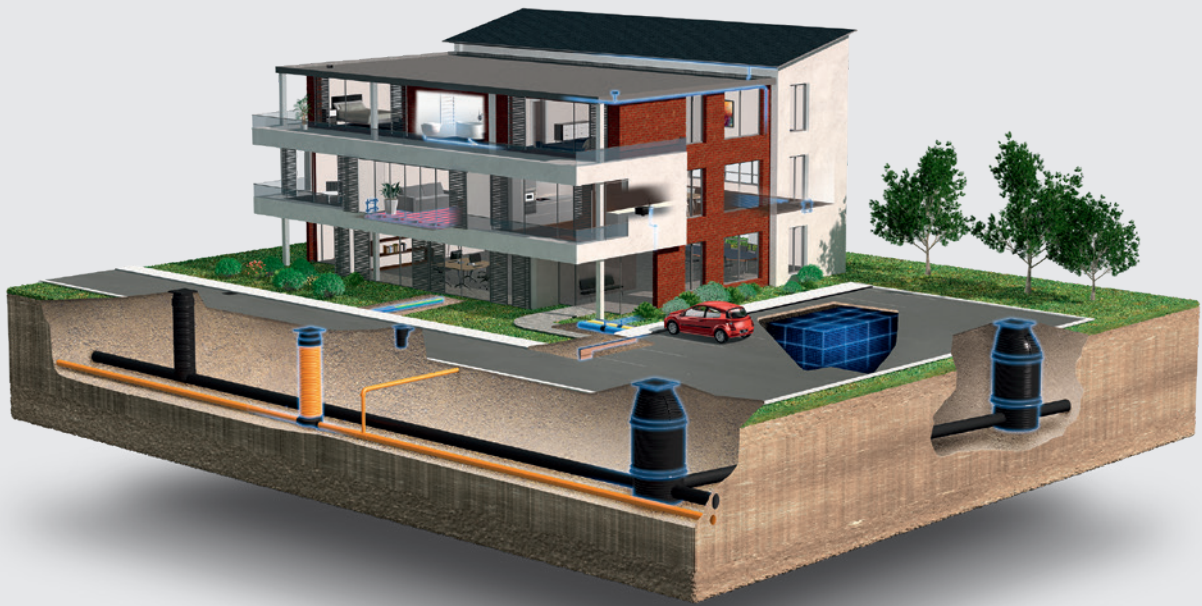
EPDM Flex coupler for connecting AS with AS+

DN mm	Article Nr.
------------------	------------------------

58-50	4066491
78-75	4066492
135-125	4066493

Discover our broad portfolio at wavin.com

- Water management
- Heating and cooling
- Water and gas distribution
- Waste water drainage



Wavin is part of Orbia, a community of companies working together to tackle some of the world's most complex challenges.

We are bound by a common purpose:
To Advance Life Around the World.

Wavin SEA | Internet www.wavin.com/asia | E-mail wavinsea@wavin.com



Wavin operates a programme of continuous product development, and therefore reserves the right to modify or amend the specification of their products without notice. All information in this publication is given in good faith, and believed to be correct at the time of going to press. However, no responsibility can be accepted for any errors, omissions or incorrect assumptions.

© 2023 Wavin Wavin reserves the right to make alterations without prior notice. Due to continuous product development, changes in technical specifications may change. Installation must comply with the installation instructions.