

WAVIN HEP20
Product List

Wavin Hep20

flexible PB Push-Fit
plumbing system



wavin

Contents

1	Hep2O Pipe	Page 3
2	Hep2O Fittings	Page 4
3	Hep2O Accessories	Page 14
4	Making connections	Page 17



The Hep2O system is available in the sizes 15, 22 and 28 mm.
The dimensioning is easy to recognize by the colour packaging:


- 15 mm: blue
- 22 mm: purple
- 28 mm: orange


Abbreviations:


BSP = British Standard Pipe Thread
DZR = Dezincification Resistant Brass

Selection of Brassware Fittings range between DZR and non-DZR families depends on local regulations applying in each market.

1. Hep2O Pipe

Description	Dia mm	Article code
 <p data-bbox="469 477 651 541">Straight Coil Pipe - Standard</p> <p data-bbox="469 583 721 647">Straight Coiled Lengths in SmartPack dispensers.</p>	15 mm x 25 m coil	HXPE25/15W
	15 mm x 50 m coil	HXPE50/15W
	15 mm x 100 m coil	HXPE100/15W
	15 mm x 200 m coil	HXPE200/15W
	22 mm x 25 m coil	HXPE25/22W
	22 mm x 50 m coil	HXPE50/22W
	28 mm x 25 m coil	HXP25/28W
	28 mm x 50 m coil	HXP50/28W

 <p data-bbox="469 863 651 927">Straight Coil Pipe - Barrier</p> <p data-bbox="469 968 829 1065">Straight Coiled Lengths in SmartPack dispensers. 5 Layer pipe with internal oxygen barrier layer.</p>	15 mm x 25 m coil	HXX25/15W
	15 mm x 50 m coil	HXX50/15W
	15 mm x 100 m coil	HXX100/15W
	22 mm x 25 m coil	HXX25/22W
	22 mm x 50 m coil	HXX50/22W
	28 mm x 25 m coil	HXX25/28W
	28 mm x 50 m coil	HXX50/28W

 <p data-bbox="469 1212 703 1276">Straight Standard Pipe - Cut Lengths</p>	15 mm x 3 m length	HXP03/15W
	15 mm x 6 m length	HXP06/15W
	22 mm x 3 m length	HXP03/22W
	22 mm x 6 m length	HXP06/22W
	28 mm x 6 m length	HXP06/28W

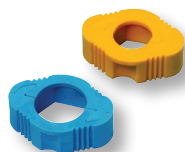
2. Hep2O Fittings

	Description	Dia mm	Article code
	Straight Connectors	15 mm	HD1/15W
	22 mm	HD1/22W	
	28 mm	HD1/28W	
	Socket Reducer	22 mm x 15 mm	HD2/22W
28 mm x 22 mm	HD2/28W		
	Elbow 90°	15 mm	HD5/15W
22 mm	HD5/22W		
28 mm	HD5/28W		
	Elbow 90° Single Socket	15 mm	HD4/15W
22 mm	HD4/22W		
	Obtuse bend 135° Single Socket	15 mm	HD8/15W
22 mm	HD8/22W		
	Equal Tee	15 mm	HD10/15W
22 mm	HD10/22W		
28 mm	HD10/28W		
	End Reduced Tee (dimensions: end x branch x end)	22 x 22 x 15 mm	HD12/22W
28 x 28 x 22 mm	HD12/28W		
	Double End Reduced Tee (dimensions: end x branch x end)	15 x 22 x 15 mm	HD 18/22W
22 x 28 x 22 mm	HD 18/28W		

**Description****Branch Reduced Tee**
(dimensions: end x branch x end)**Dia mm**22 x 15 x 22 mm
28 x 22 x 28 mm
28 x 15 x 28 mm**Article code**HD13/22W
HD13/28W
HD13A/28W**Branch Reduced Spigot Tee**
(dimensions: end x branch x end)

22 x 15 x 22 mm

HD15/22W

**Branch & One End Reduced Tee**
(dimensions: end x branch x end)22 x 15 x 15 mm
28 x 22 x 22 mmHD14/22W
HD14/28W**Demountable Stop End**15 mm
22 mm
28 mmHD62/15W
HD62/22W
HD62/28W**Tank Connector**
15 mm and 22 mm versions
for cold water only1/2" BSP x 15 mm
3/4" BSP x 22 mm
1" BSP x 28 mm (Brass)**NEW**HX20/15W
HX20/22W
HX20/28W**Straight Tap Connector**1/2" BSP x 15 mm
3/4" BSP x 15 mm
3/4" BSP x 22 mmHD25A/15W
HD25B/15W
HD25B/22W**Tap Connector Spanners**
For use with HD25 and
HD27 tap connectorsBSP 1/2"
BSP 3/4"HX54W
HX54AW



Description

Hand-Titan Tap Connectors
With rubber washer

Dia mm

BSP 1/2" x 15 mm
BSP 3/4" x 15 mm
BSP 3/4" x 22 mm

Article code

HD26A/15W
HD26B/15W
HD26B/22W



Flexible Tap Connectors

Hep2O x BSP Nut

NEW

150 mm braided, 15 mm x 1/2" BSP
300 mm braided, 15 mm x 1/2" BSP
300 mm braided, 15 mm x 3/4" BSP
300 mm braided, 22 mm x 3/4" BSP (Full Bore)
300 mm braided, 22 mm x 3/4" BSP
500 mm braided, 15 mm x 1/2" BSP
500 mm braided, 15 mm x 3/4" BSP
500 mm braided, 22 mm x 3/4" BSP (Full Bore)
500 mm braided, 22 mm x 3/4" BSP
1000 mm braided, 15 mm x 1/2" BSP
1000 mm braided, 22 mm x 3/4" BSP

HD425A/15W
HD125A/15W
HD125B/15W
HD125C/22W
HD125B/22W
HD225A/15W
HD225B/15W
HD225C/22W
HD225B/22W
HD325A/15W
HD325B/22W



NEW

300 mm white, 15 mm x 1/2" BSP
300 mm white, 15 mm x 3/4" BSP
300 mm white, 22 mm x 3/4" BSP
500 mm white, 15 mm x 1/2" BSP
500 mm white, 15 mm x 3/4" BSP
500 mm white, 22 mm x 3/4" BSP

HDW125A/15W
HDW125B/15W
HDW125B/22W
HDW225A/15W
HDW225B/15W
HDW225B/22W



Flexible Tap Connectors

Hep2O x Hep2O

NEW

300 mm braided, 15 mm x 15 mm
300 mm braided, 22 mm x 22 mm
500 mm braided, 15 mm x 15 mm
500 mm braided, 22 mm x 22 mm

HD125H/15W
HD125H/22W
HD225H/15W
HD225H/22W



NEW

300 mm white, 15 mm x 15 mm
300 mm white, 22 mm x 22 mm

HDW125H/15W
HDW125H/22W



Flexible Tap Connectors

Hep2O x Elbow BSP Nut

NEW

300 mm braided, 15 mm x 1/2" BSP





HD125D/15W



NEW

300 mm white, 15 mm x 1/2" BSP

HDW125D/15W

	Description	Dia mm	Article code
	Flexible Tap Connectors Hep2O x Brass Service Valve x BSP Nut NEW	300 mm braided, 15 mm x 1/2" BSP	HD125E/15W
		300 mm braided, 22 mm x 3/4" BSP	HD125E/22W
		500 mm braided, 15 mm x 1/2" BSP	HD225E/15W
		500 mm braided, 15 mm x 3/4" BSP	HD225I/15W
		500 mm braided, 22 mm x 3/4" BSP	HD225E/22W
	NEW	300 mm white, 15 mm x 1/2" BSP	HDW125E/15W
		300 mm white, 22 mm x 3/4" BSP	HDW125E/22W
	Flexible Tap Connectors Hep2O x Brass Service Valve (Handle) x BSP Nut NEW	300 mm braided, 15 mm x 1/2" BSP	HD125EH/15W
		300 mm braided, 22 mm x 3/4" BSP	HD125EH/22W
	Flexible Tap Connectors Hep2O x Monobloc Mixers NEW	300 mm braided, 15 mm x M10*	HD125F/15W
		300 mm braided, 15 mm x M12*	HD125G/15W
		*sold and priced as a pair	
	Bent Tap Connector	1/2" BSP x 15 mm	HD27/15W
	Adaptor - Female BSP/Hep2O Socket DZR Brass	1/2" BSP x 15 mm	HX28/15W
		3/4" BSP x 15 mm NEW	HX24/15W
		3/4" BSP x 22 mm	HX28/22W
		1" BSP x 28 mm	HX28/28W



Description

**Adaptor - Female
BSP/Hep₂O Socket**
Non DZR Brass

Dia mm

3/8" BSP x 15 mm **NEW**
1/2" BSP x 15 mm
1/2" BSP x 22 mm **NEW**
3/4" BSP x 22 mm
1" BSP x 28 mm

Article code

HE633/15W
HE28/15W
HE653/22W
HE28/22W
HE28/28W



**Wall Flange Plate Adaptor
- Female**
Non-DZR Brass

1/2" BSP x 15 mm **NEW**

HE800/15W



**Adaptor - Male
BSP/Hep₂O Socket**
DZR Brass

1/2" BSP x 15 mm
3/4" BSP x 22 mm
1" BSP x 28 mm

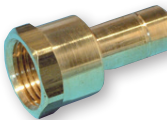
HX29/15W
HX29/22W
HX29/28W



**Adaptor - Male
BSP/Hep₂O Socket**
Non DZR Brass

3/8" BSP x 15 mm **NEW**
1/2" BSP x 15 mm
1/2" BSP x 22 mm **NEW**
3/4" BSP x 22 mm
1" BSP x 28 mm

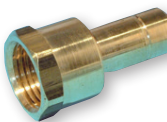
HE632/15W
HE29/15W
HE652/22W
HE29/22W
HE29/28W



**Adaptor - Female
BSP/Hep₂O Spigot**
DZR Brass

1/2" BSP x 15 mm
3/4" BSP x 22 mm
1" BSP x 28 mm

HX30/15W
HX30/22W
HX30/28W



**Adaptor - Female
BSP/Hep₂O Spigot**
Non DZR Brass

1/2" BSP x 15 mm
3/4" BSP x 22 mm
1" BSP x 28 mm

HE30/15W
HE30/22W
HE30/28W

	Description	Dia mm	Article code
	Adaptor - Male BSP/Hep2O Spigot DZR Brass	1/2" BSP x 15 mm 3/4" BSP x 22 mm 1" BSP x 28 mm	HX31/15W HX31/22W HX31/28W
	Adaptor - Male BSP/Hep2O Spigot Non DZR Brass	1/2" BSP x 15 mm 3/4" BSP x 22 mm 1" BSP x 28 mm	HE31/15W HE31/22W HE31/28W
	Threaded Elbow - Female Non DZR Brass	3/8" BSP x 15 mm 1/2" BSP x 15 mm 1/2" BSP x 22 mm 3/4" BSP x 22 mm 1" BSP x 28 mm	NEW HE637/15W NEW HE5/15W NEW HE5A/22W NEW HE5/22W NEW HE5/28W
	Threaded Elbow - Male Non DZR Brass	3/8" BSP x 15 mm 1/2" BSP x 15 mm 1/2" BSP x 22 mm 3/4" BSP x 22 mm 1" BSP x 28 mm	NEW HE638/15W NEW HE5M/15W NEW HE654/22W NEW HE5M/22W NEW HE5M/28W
	Draincock Brass 15 mm spigot DZR Brass	15 mm	HX32/15W
	Wall Plate Elbow	1/2" BSP x 15 mm 3/4" BSP x 22 mm	HX6/15W HX6/22W



Description

Wall Screw Elbow
Non DZR Brass

Dia mm

1/2" BSP x 15 mm
1/2" BSP x 15 mm
(Extended)
1/2" BSP x 22 mm
3/4" BSP x 22 mm

Article code

HE6C/15W
HE6E/15W
HE6CB/22W
HE6C/22W



Universal Wall Plate Elbow
Non DZR Brass

1/2" BSP x 15 mm

HE6A/15W



Wall Plate Elbow
Non DZR Brass

1/2" BSP x 15 mm
1/2" BSP x 22 mm

NEW
NEW

HE6MA/15W
HE6MA/22W



Tee - Female Threaded Branch
Non DZR Brass

15 mm x 1/2" BSP Branch
22 mm x 1/2" BSP Branch
22 mm x 3/4" BSP Branch

NEW
NEW

HE16/15W
HE16A/22W
HE16/22W



Wall Plate Tee - Female
Non-DZR Brass

15 mm x 1/2" BSP Branch*
15 mm x 1/2" BSP Branch
22 mm x 1/2" BSP Branch

NEW
NEW
NEW

HE7/15W
HE7MA/15W
HE7MA/22W

* HE7/15W has offset branch



Cylinder Connector Spigot
DZR Brass

1" BSP x 22 mm spigot

HX34/22W

**Description**

Gate Valve - Hot/Cold
DZR Brass
Brass fitted with Hep₂O ends
(suitable for hot and cold water and central heating)

Dia mm

15 mm x 15 mm
22 mm x 22 mm

Article code

HX35/15W
HX35/22W

**Stopcock - Cold Water**

Fitted with Hep₂O ends
(for cold water use only)

15 mm x 15 mm
22 mm x 22 mm

HX36/15W
HX36/22W

**Stopcock - Cold Water**

Hep₂O to MDPE/HDPE conversion
22 mm Hep₂O to 25 mm MDPE/HDPE

25 mm MDPE/HDPE
x 22 mm Hep₂O

HX43/22W

**Shut-off Valve**

With hot/cold indicator
insert (not for use with central heating)

15 mm

HX37/15W

**Appliance Valve**

With hot/cold indicator
insert (not for use with central heating)

15 mm

HX38/15W

**Straight Service Valve**

With hot/cold indicator
insert (not for use with central heating)

15 mm

NEW

HX18/15W



Description

Angled Service Valve

With hot/cold indicator insert (not for use with central heating)

Dia mm

15 mm

NEW

Article code

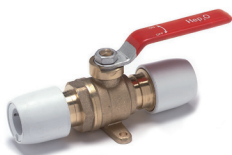
HX19/15W



Double-Check Valve

15 mm x 15 mm

HX72/15W



Lever Ball Valve

Non-DZR Brass
(no fixing points)

15 mm x 15 mm

22 mm x 22 mm

28 mm x 28 mm

NEW

NEW

NEW

HE37C/15W

HE37C/22W

HE37C/28W

DZR Brass

(with fixing points)

15 mm x 15 mm

22 mm x 22 mm

HX22/15W

HX22/22W

Suitable for hot and cold water and central heating



**Shut-off Valve
- Hidden Handle**

Non-DZR Brass

15 mm x 15 mm

22 mm x 22 mm

NEW

NEW

HE37A/15W

HE37A/22W



**Shut-off Valve
- Tri-Handle**

Non-DZR Brass

15 mm x 15 mm

22 mm x 22 mm

NEW

NEW

HE37B/15W

HE37B/22W



Description

Ball Valve
- Chrome Lever Handle
Non-DZR Brass

Dia mm

15 mm x 15 mm
22 mm x 22 mm
28 mm x 28 mm

NEW
NEW
NEW

Article code

HE37D/15W
HE37D/22W
HE37D/28W



Ball Valve
- Hidden Handle
Non-DZR Brass

15 mm x 15 mm
22 mm x 22 mm
28 mm x 28 mm

NEW
NEW
NEW

HE37E/15W
HE37E/22W
HE37E/28W



Manifolds,
Closed Spigot Type
Polybutylene

2 Port 22 x 15 mm
3 Port 22 x 15 mm

HX88/22W
HX89/22W



Manifolds, Socket
to Socket Type
Polybutylene

2 Port 22 x 15 mm
3 Port 22 x 15 mm

HX88B/22W
HX89B/22W

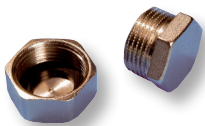


Manifolds, Plated Brass with Taps
Modular system - can be used to build manifolds with any number of ports and combinations of 15 mm and 22 mm outlets

1-Port 3/4" BSP x 15 mm
1-Port 3/4" BSP x 22 mm
2-Port 3/4" BSP x 15 mm
3-Port 3/4" BSP x 15 mm
4-Port 3/4" BSP x 15 mm

NEW
NEW

HX91T/15W
HX91T/22W
HX92T/15W
HX93T/15W
HX94T/15W





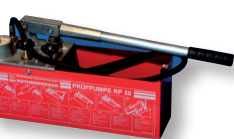




Manifold end-caps

3/4" BSP Female
3/4" BSP Male

HX97 GY
HX98 GY

3. Hep2O Accessoires

	Description	Dia mm	Article code
	<p>Screws</p> <p>For use with Wall Screw Elbows series HE6 and HX6</p>	M6 x 6 mm (100 Pack)	HE6S GR
	<p>Lubricant</p> <p>400 ml Aerosol Can</p>	Joint Lubricant Spray	HX200
	<p>SmartSleeve</p>	<p>15 mm</p> <p>22 mm</p> <p>28 mm</p>	<p>HX60/15W</p> <p>HX60/22W</p> <p>HX60/28W</p>
	<p>Copper Pipe End Protector</p>	<p>15 mm</p> <p>22 mm</p>	<p>HX61/15W</p> <p>HX61/22W</p>
	<p>Pipe Clip - Screw Type</p>	<p>15 mm</p> <p>22 mm</p> <p>28 mm</p>	<p>HX85/15W</p> <p>HX85/22W</p> <p>HX85/28W</p>
	<p>Pipe Clip Spacer</p>	<p>15 mm</p> <p>22 mm</p>	<p>HX86/15W</p> <p>HX86/22W</p>
	<p>Pipe Clip - Cable Type</p>	<p>15 mm</p> <p>22 mm</p> <p>28 mm</p>	<p>HX65/15W</p> <p>HX65/22W</p> <p>HX65/28W</p>
	<p>Blanking Peg</p> <p>For Demountable Fittings</p>	<p>15 mm</p> <p>22 mm</p> <p>28 mm</p>	<p>HX44/15W</p> <p>HX44/22W</p> <p>HX44/28W</p>

	Description	Dia mm		Article code
	HepKey Plus For Demountable Fittings	15 mm 22 mm 28 mm		HX79/15W HX79/22W HX79/28W
	HepTool For Demountable Fittings in restricted access locations	10 and 28 mm 15 and 22 mm	NEW NEW	HX77/10W HX77/15W
	Hep₂O Joint Testing Kit Used to pressure test Hep ₂ O installations at site. See pages 54-55 of the Hep ₂ O Installer Guide for details of test procedures.			HX81 GR
	Terminal Back Plate	Terminal back plate Back plate flat		HX103 BL HX103A GR
	Conduit Terminal	1/2" BSP x 15 mm		HX101/15W
	Cold Forming Bend Fixture Metal with passivate finish	15 mm 22 mm		HX75/15 GR HX75/22 GR
	Pipe Cutters	For pipe diameter up to 28 mm max. (standard) For pipe diameter up to 25 mm max. (procutter) For pipe diameter up to 42 mm max. (ratchet) For pipe diameter up to 28 mm max. (ratchet)		HD74 GR HD75 GR HD77 GR HD78 GR



4. Making connections

Jointing with Hep2O pipe and fittings

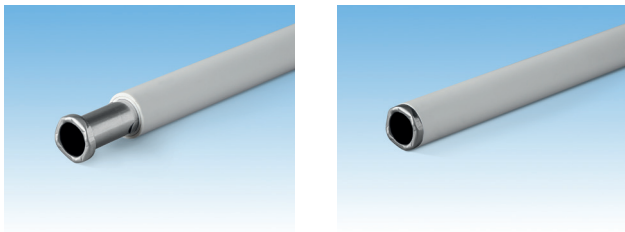
SmartSleeve™ pipe support sleeve

Before making a joint using Hep2O pipe, it is essential to insert a Hep2O SmartSleeve™ pipe support sleeve into the cut pipe end. The only exception is when connecting to the open spigot end of a Hep2O fitting.

The SmartSleeve™ has several purposes:

- ④ It ensures the pipe retains its circular cross-section under all operating conditions.
- ④ It eases insertion of the pipe into the fitting.
- ④ The profiled end of the SmartSleeve™ helps you to check the pipe is fully inserted. See In4Sure™ joint recognition technology.
- ④ It maintains the rigidity of the pipe within the fitting.
- ④ Barbs on the SmartSleeve™ lock it in the pipe, which helps ensure it is not left in the fitting when demounting.

All SmartSleeve™ pipe inserts are manufactured from 'food quality' 316 stainless steel and are impervious to contaminants. They are designed to be captive in the pipe but can be removed if required, using long nosed pliers. However, if damaged, the SmartSleeve™ must not be re-used.



Inserting SmartSleeve™ into pipe.

Jointing procedure

Whichever type of Hep2O fitting is used, the same jointing procedure should be followed.



Photo 1.



Photo 2.



Photo 3.

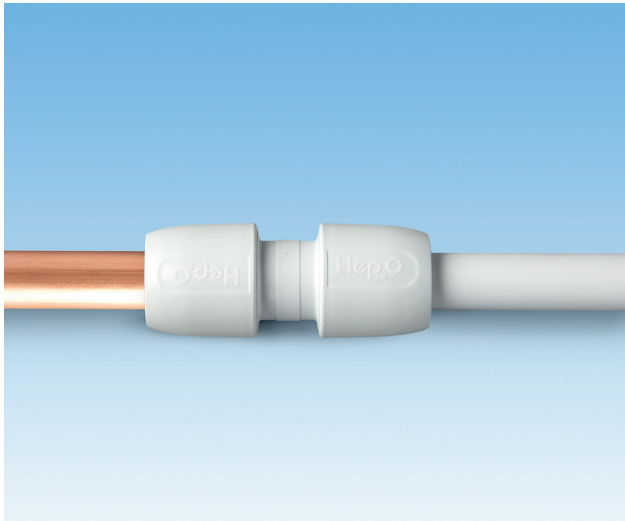


Photo 4.

1. Cut the pipe squarely at one of the 'A' marks using recommended pipe cutters and ensure the pipe end is free from burrs.
2. Insert a Hep2O SmartSleeve™ pipe support sleeve into the pipe end.
3. Push the pipe firmly into the fitting, then use Hep2O's unique In4Sure™ joint recognition technology to 'feel' if the pipe is fully inserted.
4. Tug back on the pipe to ensure the grab-ring engages correctly and prevents the pipe withdrawing.

Joining copper pipe to Hep2O fittings

Hep2O fittings have been designed to form reliable joints with metric copper pipe which conforms to BS EN 1057 - R520.



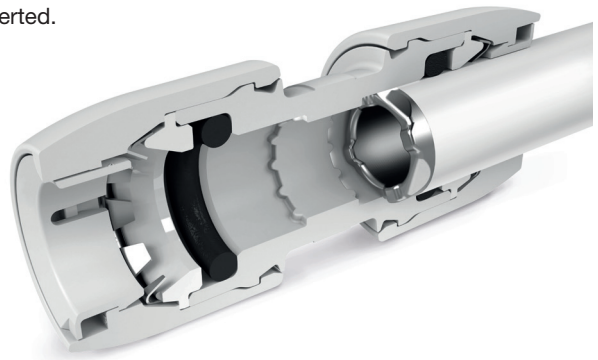
Hep2O fittings are also compatible with copper pipe.

1. Measure the pipe, allowing sufficient length for insertion into the fitting, and mark with a pencil.
2. Cut the copper pipe with a wheel cutter.
3. Carefully inspect the pipe ends for burrs or swarf.
4. Push the pipe firmly into the fitting.
5. Tug back on the pipe to ensure the grab-ring engages correctly and prevents the pipe withdrawing.

Checking the joint using In4Sure™ joint recognition technology

Follow normal procedure to establish the insertion depth of the pipe into the fitting as previously described.

In4Sure™ joint recognition technology then provides a further check by allowing you to 'feel' if the pipe is fully inserted.



Cut-away showing In4Sure™ joint recognition technology.

To use In4Sure™ joint recognition technology:

1. Hold the centre (fixed) part of the fitting in one hand.
2. After inserting the appropriate pipe sleeve, push the pipe firmly into the fitting.
3. While still pushing, rotate the pipe using a screwing action. If the pipe is fully inserted you will feel a 'rumbling' sensation as the profiled end of the SmartSleeve™ passes over the castellated seat inside the fitting.
4. Pull back to check the joint integrity.

This simple procedure is designed to give you the peace of mind that comes from knowing that the joint is good. You can also make a visual check by checking the next '^' mark is level with the end of the fitting.

Note:

New pipe insert for copper providing joint recognition will be available soon.

Demounting joints using the Hep2O HepKey™ system

The HepKey Plus™ is colour-coded: **15 blue**, **22 purple** and **28 mm orange**.



HepKey Plus™.

To use HepKey Plus™:

1. Place the HepKey Plus™ around the pipe
2. Clip HepKey Plus™ over the fitting
3. In this position it depresses the inner release ring of the fitting.
4. Withdraw the pipe from the fitting.



Step 1.



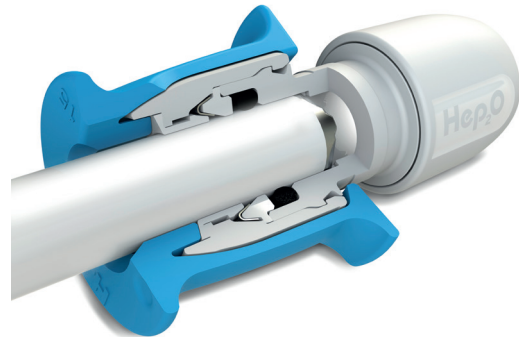
Step 2.



Step 3.



Step 4.



Cut-away drawing of HepKey Plus™.

Note:

Before re-using the fitting we recommend applying a small amount of Jointing Lubricant Spray (code HX200) to the O-ring seal inside the fitting.

Documentation

The following documentation on the Wavin Hep2O system is also available:

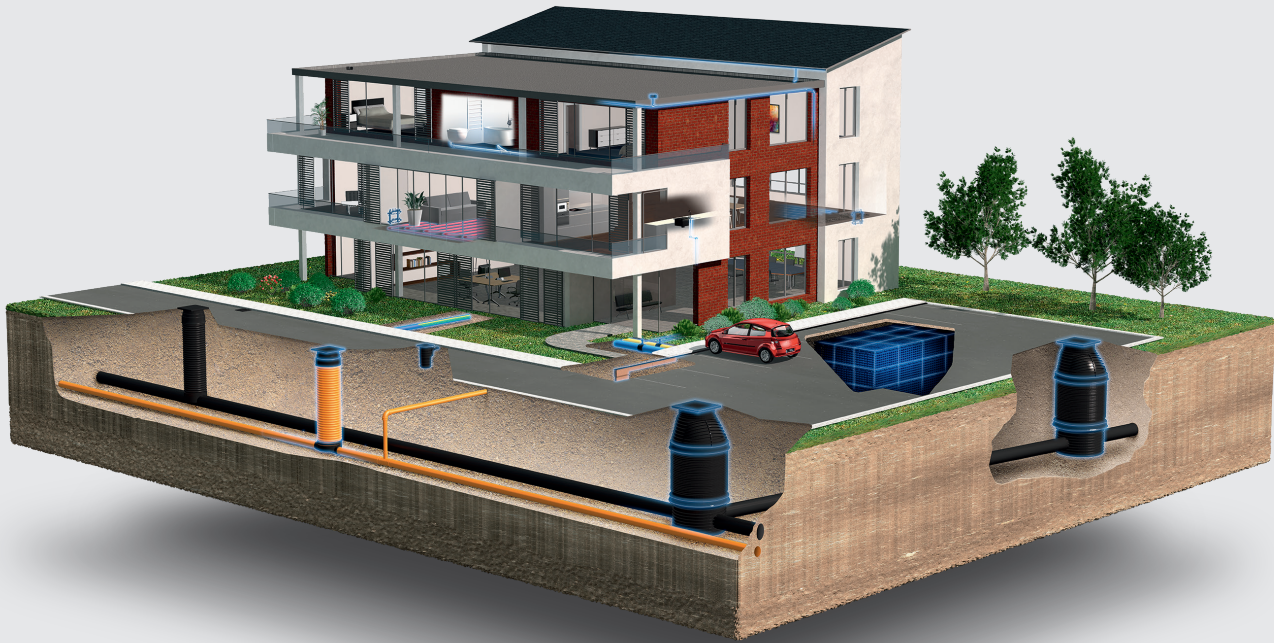
- [Data sheet](#)
- [Installer Guide](#)

Demounting sequence using HepKey Plus™.

Discover our broad portfolio at
www.wavin.ae and www.wavin.asia

Water management
Heating and cooling

Water and gas distribution
Waste water drainage



Wavin is part of Orbia, a community of companies working together to tackle some of the world's most complex challenges. We are bound by a common purpose: To Advance Life Around the World.



- 🌐 www.wavin.ae for Middle East & North Africa
- 🌐 www.wavin.asia for Asia Pacific

Wavin operates a programme of continuous product development, and therefore reserves the right to modify or amend the specification of their products without notice. All information in this publication is given in good faith, and believed to be correct at the time of going to press. However, no responsibility can be accepted for any errors, omissions or incorrect assumptions.

© 2020 Wavin Wavin reserves the right to make alterations without prior notice. Due to continuous product development, changes in technical specifications may change. Installation must comply with the installation instructions. All rights reserved. No part of this book may be reproduced, reprinted or utilized in any form or by any means, whether electronic, mechanical, by photocopies, recordings, or other means, now known or hereafter invented, without prior written permission from the publisher.